

Data transfer
WLTOUCH - WLCPC

Instruction manual



Wireless Professional CPC

Installationsanleitung

Content

1	General	4
2	Procedure	4
3	Revision history	7
4	Contact information	8

1 General

This document describes the system data transfer of the WirelessProfessional installation from a WLTOUCH to a WLCPC under help of the provided Backup and Recovery script.

The transfer from a WLCPC to a WLTOUCH takes place by the same procedure.

Important: Both systems must have installed the same WirelessProfessional version and the same WirelessProfessional language packages.

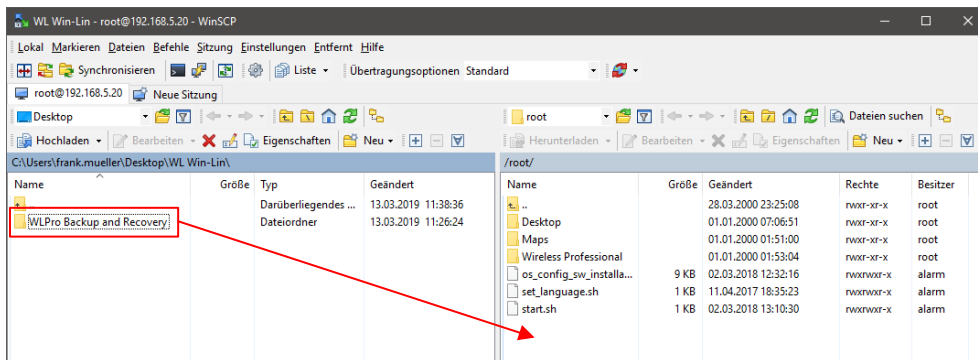
2 Procedure

Make a copy of the folder **WLPro Backup and Recovery** on the WLTOUCH.

Important: Close the Wireless Professional software on the WLTOUCH!

Execute the file **WLPro_Windows_backup.bat** with a double-click.

The script created a folder **backup** in the folder **WLPro Backup and Recovery**. This folder contains all the settings and log-files. Transfer the folder **WLPro Backup and Recovery** to the CPC. See instruction manual WLCPC.



Make a VNC connection to the WLCPC. See instruction manual WLCPC.

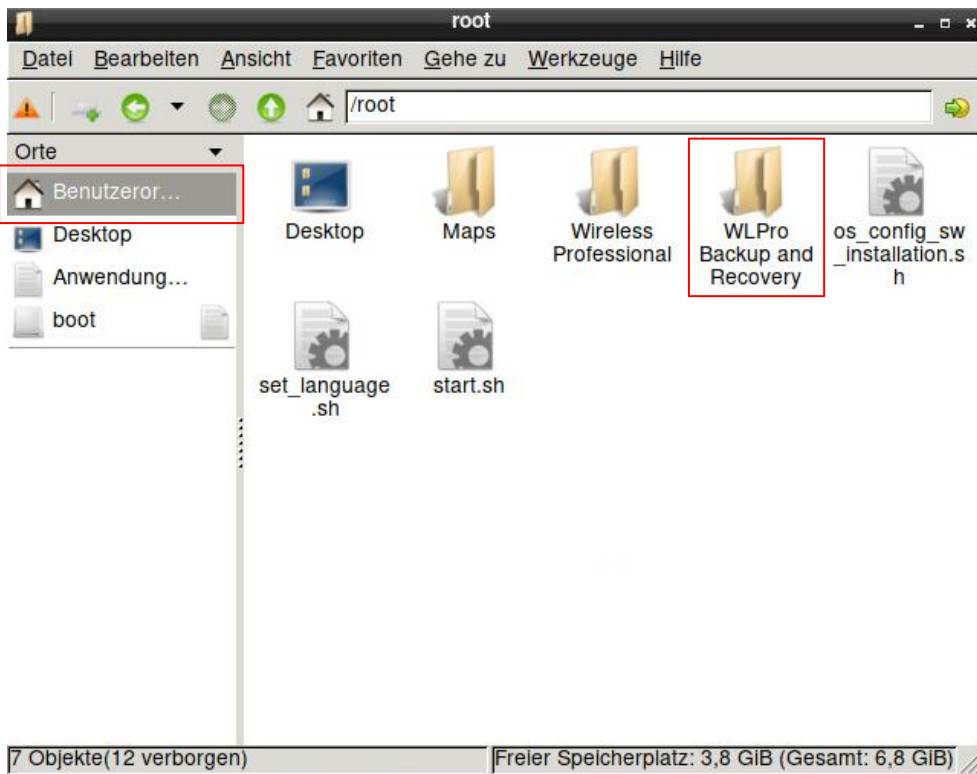
Important: Close the Wireless Professional software on the WLCPC!

Open PCManFM.



Open the user folder.

Open the folder **WLPro Backup and Recovery**.

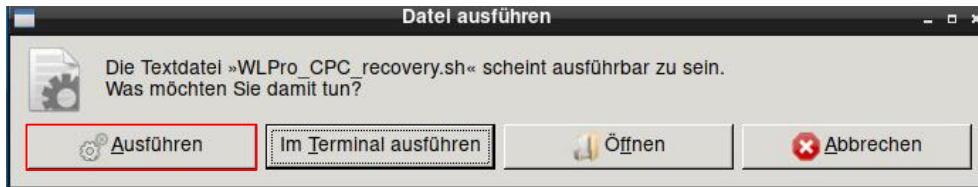


Right click on the file **WLPro_CPC_recovery.sh**, Dateieigenschaften and Berechtigungen.

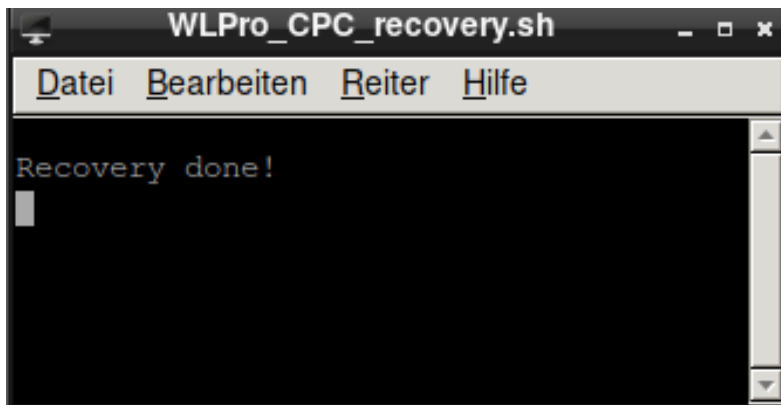
Execute: Choose **Jeder** confirm and close the dialog with OK.



Execute the file **WLPro_CPC_recovery.sh** via double-click and confirm the dialog with **Ausführen**.



In case of a successful recovery, the following message will show up:



3 Revision history

Data transfer WLTOUCH - WLCPC		
date	Software-version / revision	Comment / most important changes compared to the previous version
27.03.2019	1.0	creation

4 Contact information

