



EMERGENCY LIGHT WITH LIGHTLINX® CLOUD. IT DOESN'T GET ANY SIMPLER THAN THIS.

Wireless Basic® – our smart single-battery emergency lighting solution for small installations of up to 50 luminaires in TÜV-certified quality. This solution also takes you a step closer to the new DIN requirement for single-battery luminaires. Installed in a flash, programmed and monitored wirelessly via Bluetooth Low Energy. You can also use our LIGHTLINX® online portal to archive your test logs for enhanced data security and ease of maintenance.

Smart emergency lighting with Wireless Basic® and LIGHTLINX®
www.rp-group.com/wirelessbasic

Your Wireless Basic® emergency lighting system is ready for you to use in just 7 steps

1. INSTALL LUMINAIRES

Install luminaires and set up power supply (230 VAC).
The green LED lights up on all luminaires.

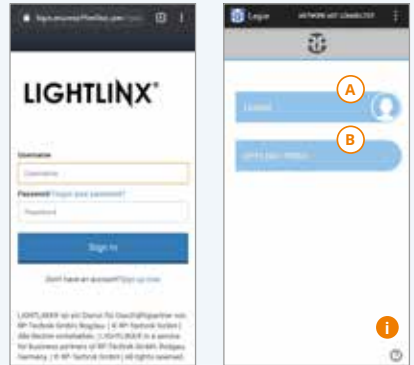


2. INSTALL APP

Install and launch **Wireless Basic® App**.
If required, create **LIGHTLINX®** access to use the cloud function*.

Tap on “Login” **(A)** if you want to use the cloud functions for this project, otherwise tap on “Offline mode” **(B)**.

i *Tip: Tap on the question mark in the bottom right for detailed information about how to use the app at any time.*



* Launches the app straight away. Internet access and a personal e-mail address are needed.

3. CREATE PROJECT


Project list:

Create a **new project** using “Add” **(C)**.

Enter a **project name** **(D)** and **location** **(E)** for the installation. For **GPS coordinates**, tap on **LOCATION**.

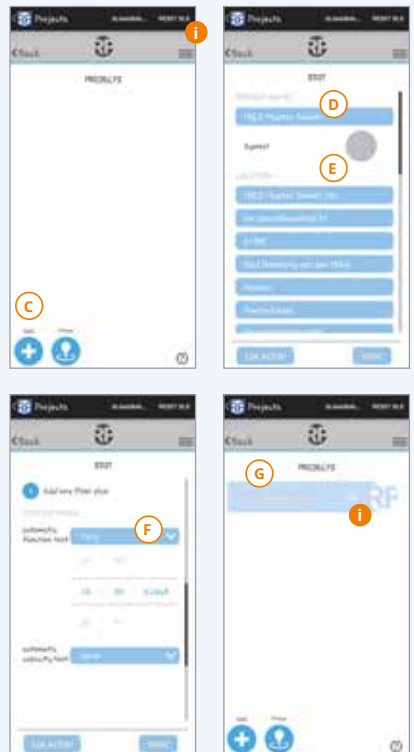
Under this: Set schedules for **automatic tests** **(F)**. If necessary, observe local bans on automatic tests.

Save project by tapping on **SAVE**.

i *Tip: To change the language, open the  menu in the top right and tap on “Options”.*

Open project by tapping on the project name **(G)**.

i *Tip: View/change settings by tapping on .*

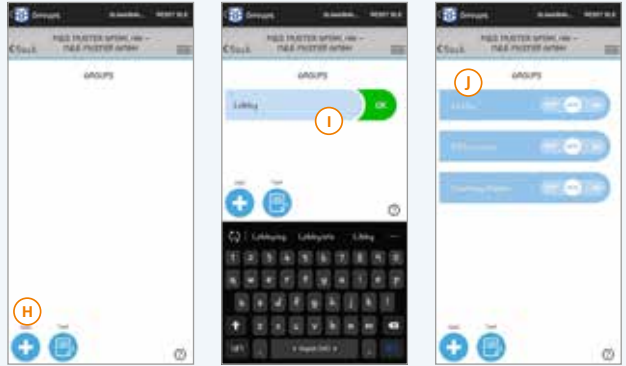


4. CREATE GROUPS

Group list:

Add one or more **groups** **(H)**, give each group a name (e.g. "Entrance area") **(I)** and confirm with **OK**.

Open group by tapping on the group name **(J)**.



5. ADD AND CONFIGURE LUMINAIRES

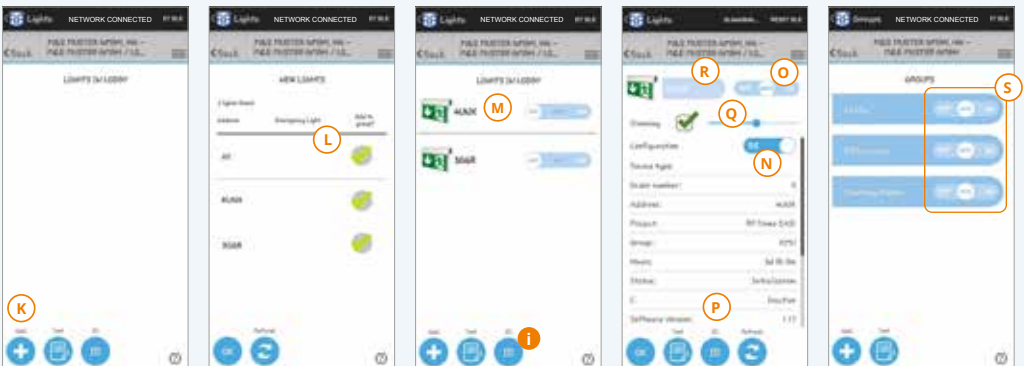
Tap on "Add" **(K)** in the luminaire list on screen. Select luminaire **(L)** and confirm with **OK**. Wait for luminaire association.

Configure all luminaires:

Tap on luminaire address **(M)**. Define operating mode (**CO (continuous operation)**/**SB (stand-by operation)**) **(N)**. You have the option of testing luminaires by switching **(O)**, allowing to flash **(P)**, dimming **(Q)** and naming **(R)**. To save, tap on **OK**.

Tap on **Back** in the top left to return to the group list. Move all slide bars at the same time to "On" or "Off", then to "Auto" **(S)**.

All luminaires are switched to their programmed operating mode.




(I) Tip: Label each luminaire with a unique 4-digit device address. During operation, the luminaires are identified by means of a flash function (ID).

6. 24 HOURS OFF (CHARGING)

Leave all luminaires to charge for 24 hours with the power supply connected.

7. RUN CAPACITY TEST

Function test for all luminaires:

In the group list, tap on "Test" , then "System test". The app starts a function test in all luminaires and then displays the result.

Start-up is then complete.

Important: You will find more information about maintaining your Wireless Basic® installation, data maintenance and creating test logs in the manual at www.rp-group.com.

Use the LIGHTLINX® web portal to manage your projects, share them or forward them. More information is available at www.lightlinx.com.



Troubleshooting: If there are no installed luminaires in the luminaire list, please check your network. Is the title line showing "Network connected"? If not, tap on "Connect". Once the connection has been established, you can reload the luminaire list by tapping on "Update".

Note: You will need an Android tablet* or a smartphone* with the Wireless Basic® app installed to start up Wireless Basic® luminaires. The latest version of the app can always be found at: www.rp-group.com/wirelessbasic



You can operate Wireless Basic® either with or without cloud functions. **So check with the operator which variant he or she wants before starting up.** If the cloud functions are to be used, the tablet or smartphone will need Internet access to log in and synchronise with the cloud. Internet access is not needed to set up and maintain the luminaires on site.

If you want to use the cloud functions available for Wireless Basic®, you will need an account on the www.lightlinx.com web portal. You can also create this using the app. You will have to enter a release code the first time you log into LIGHTLINX® and/or the app: This can be found on the luminaire packaging.

You will find the Wireless Basic® manual at www.lightlinx.com. Please log in to download.

* System requirements: Android version 6 ("Marshmallow") or higher, Bluetooth 4.1 with BLE, 64 MB of memory (Flash), display of 800 x 1280 pixels or more (DSVGA)