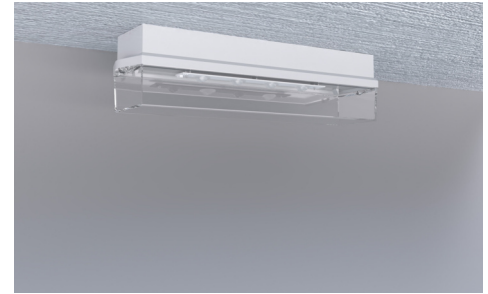




**Art.-Nr: KWIW029**  
**Emergency light Centralised power supply systems**  
**Universal, CPS, IP65, Polycarbonate, White, Flexiklick**

Classic bar-shaped polycarbonate luminaire for wall or ceiling mounting. Straight lines as well as the robust construction with a high ingress protection allow versatile use.

The luminaire is fitted with the innovative flexible plug-in system for rapid use of the right lens. The corridor lens is supplied with every luminaire. A round lens, spotlight lens and beam lens are available as options.



More information  
[www.rp-group.com/en/item/KWIW029](http://www.rp-group.com/en/item/KWIW029)



## TECHNICAL DATA

Luminaire type	Emergency light
Mounting	Universal
Pictograph	No
Illuminant	LED
Housing material	Polycarbonate
Housing color	White
Protection type (IP)	IP65
Impact resistance (IK)	6
Certification	WEEE, CE, D-Sign, TÜV Rheinland Type approved, ENEC
Insulation class	2
Supply	Centralised power supply systems
Monitoring	Without monitoring
Bridging time	CPS
Battery	/
Operating mode	Permanent circuit
Input voltage AC	230 V
Input frequency	50 / 60 Hz
Input voltage DC	100-254 V
Power max.	4,6 W
Power maintained	4,6 W



Power non-maintained	0 W
Ambient temperature maintained mode	-20 °C to 40 °C
Ambient temperature non-maintained mode	-20 °C to 40 °C
Depth	86 mm
Width	390 mm
Height	99 mm
Weight	0.67
Weight incl. packaging	0.77
Connection cross-section	1.5 mm <sup>2</sup>
Switching input	No
Emergency light blocking	No
Battery connection	No
Dimming function	No
Luminous flux mains	520 lm
Luminous flux emergency	520 lm
Customs tariff number	94056120
GTIN	4260659566418



## TECHNICAL DRAWING



## ACCESSORY LIST

BKW - Robust steel protective grille for emergency lighting

KWIE - Installation frame

As of: 04.07.2026 - Subject to technical changes and errors.