

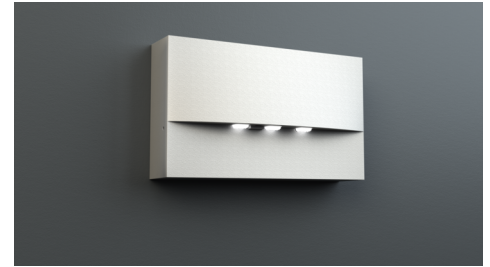


**Art.-Nr: WAF529CC**  
**Emergency light Centralised power supply systems**  
**Wall mounting, CPS, IP20, Zinc die-cast, White**

High-grade zinc die-cast safety luminaire for surface mounting on the wall.

The radiating characteristics run parallel to the wall to help perfectly illuminate escape and emergency routes.

Control and monitoring via central 24 V low-power system.



More information

[www.rp-group.com/en/item/WAF529CC](http://www.rp-group.com/en/item/WAF529CC)



## TECHNICAL DATA

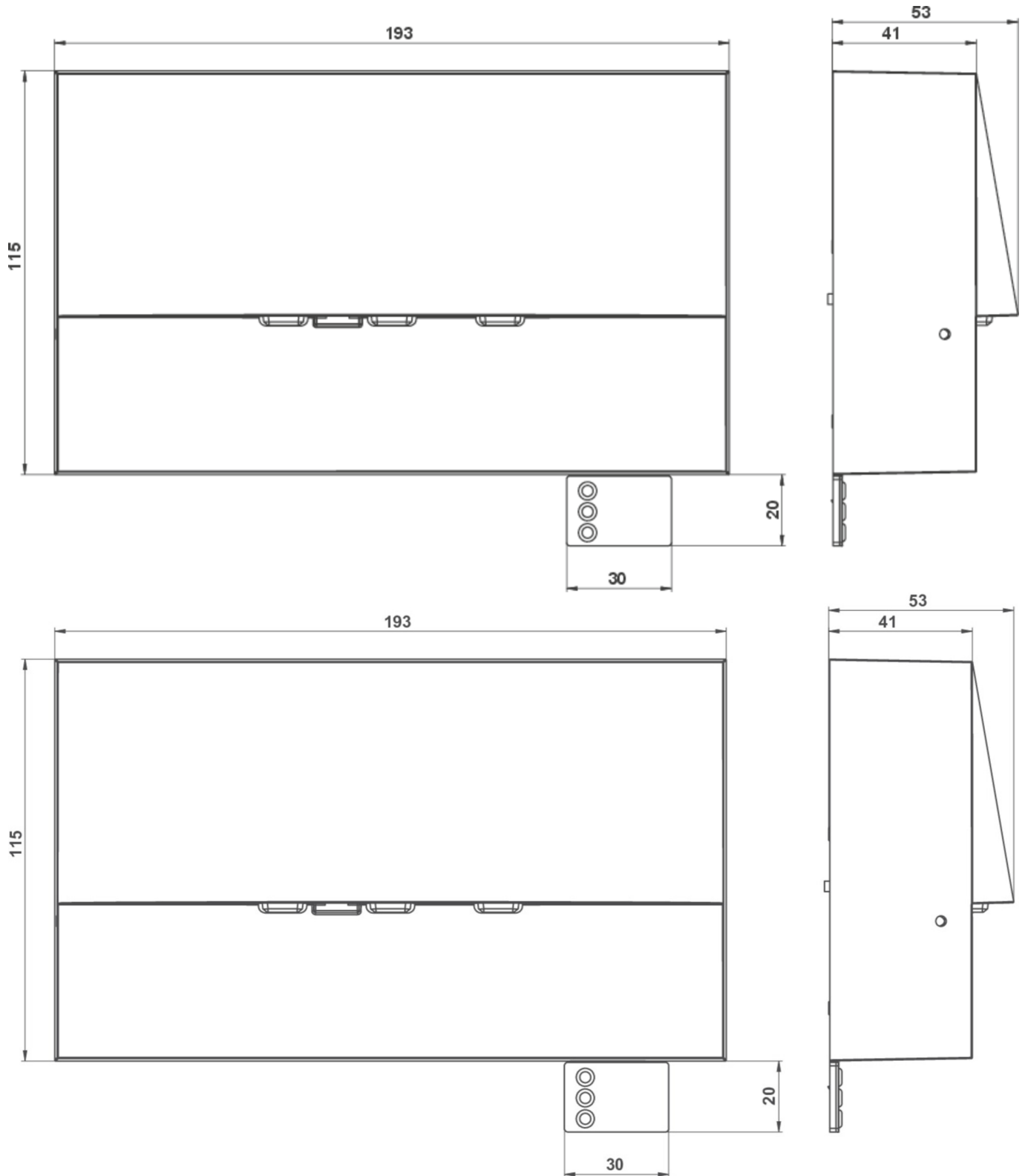
Luminaire type	Emergency light
Mounting	Wall mounting
Pictograph	No
Illuminant	LED
Housing material	Zinc die-cast
Housing color	White
Protection type (IP)	IP20
Impact resistance (IK)	4
Certification	WEEE, CE
Insulation class	3
Supply	Centralised power supply systems
Monitoring	CoreCompact 24 (CC)
Bridging time	CPS
Battery	/
Operating mode	Non-maintained / maintained
Input voltage AC	24 V
Power max.	4,1 W
Power maintained	4,1 W
Power non-maintained	0,4 W
Ambient temperature maintained mode	-5 °C to 40 °C
Ambient temperature non-maintained mode	-5 °C to 40 °C
Depth	193 mm



Width	53 mm
Height	115 mm
Weight incl. packaging	0.03
Connection cross-section	2.5 mm <sup>2</sup>
Switching input	No
Emergency light blocking	No
Battery connection	No
Luminous flux mains	420 lm
Luminous flux emergency	420 lm
Customs tariff number	94056180
GTIN	4260682157553



TECHNICAL DRAWING



As of: 10.07.2026 - Subject to technical changes and errors.