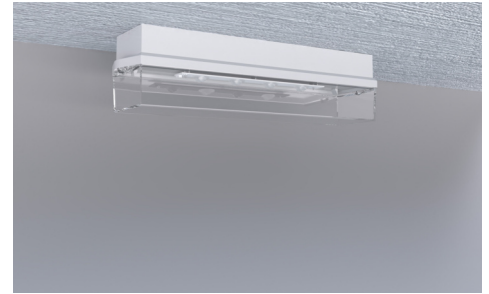




Art.-Nr: KWIW423SC-TT
Emergency light Self-contained
Universal, 3 h, IP65, Polycarbonate, White, Flexiklick, low-temperature batteries

Classic, robust, plastic, beam-like safety luminaire with a high level of protection and for versatile use.

Automatic monitoring of safety luminaire with SelfControl. The luminaire is fitted with the innovative flexible plug-in system for rapid use of the right lens. The corridor lens is supplied with every luminaire. A round lens, spotlight lens and beam lens are available as options. The designation "TT" stands for **low-temperature batteries**. These special **lithium iron phosphate batteries** are designed to function reliably even at low temperatures. They offer stable performance and a long lifespan, even under demanding conditions.



More information
www.rp-group.com/en/item/KWIW423SC-TT



TECHNICAL DATA

Luminaire type	Emergency light
Mounting	Universal
Pictograph	No
Illuminant	LED
Housing material	Polycarbonate
Housing color	White
Protection type (IP)	IP65
Impact resistance (IK)	6
Certification	WEEE, CE, 5 years warranty, D-Sign
Insulation class	2
Supply	Self-contained
Monitoring	SelfControl (SC)
Bridging time	3 h
Battery	LiFePO4 3,2 V/3,3 Ah
Operating mode	Non-maintained / maintained
Input voltage AC	180 V - 250 V
Input frequency	50 Hz



Power max.	7,3 W
Power maintained	5,9 W
Power non-maintained	2 W
Ambient temperature maintained mode	-15 °C to 40 °C
Ambient temperature non-maintained mode	-15 °C to 40 °C
Depth	86 mm
Width	390 mm
Height	99 mm
Weight	0.79
Weight incl. packaging	0.89
Connection cross-section	2,5 mm ²
Switching input	Yes
Emergency light blocking	No
Battery connection	Connector
Dimming function	No
Luminous flux mains	520 lm
Luminous flux emergency	520 lm
Customs tariff number	94056120
GTIN	4260766558269



TECHNICAL DRAWING



ACCESSORY LIST

BKW - Robust steel protective grille for emergency lighting

KWIE - Installation frame

As of: 04.07.2026 - Subject to technical changes and errors.