

RPower OGiV12930HP

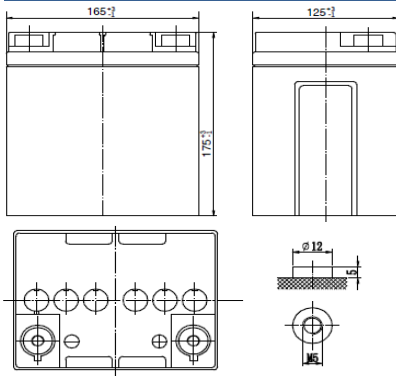
(12V 26Ah AGM High-Power-Battery)

with UL94 V-0 Housing

EAN: 4260349823616

Floating Life at 20°C designed for up to 12 years

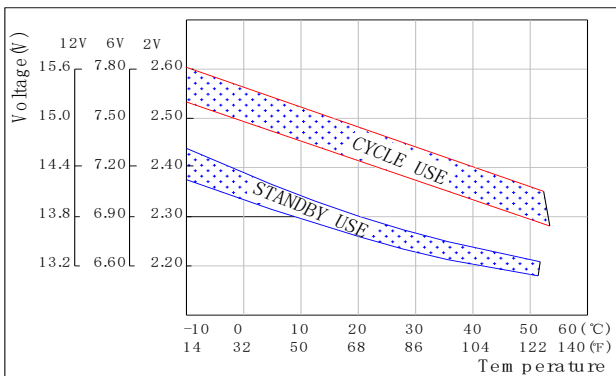
Dimensions



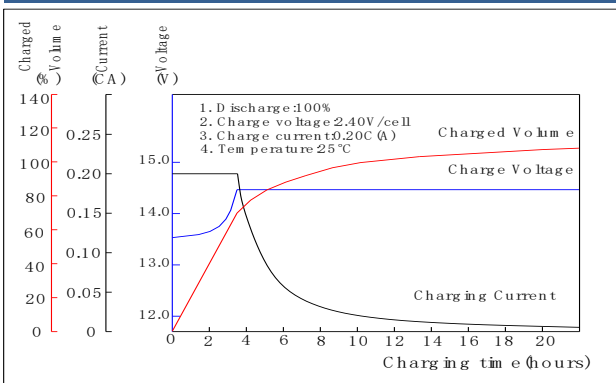
Specifications

Nominal Voltage		12V
Capacity (10hr@25°C@1.80V/C)		26Ah
Dimensions	Length	165mm (6.50inch)
	Width	125mm (4.92inch)
	Height	175mm (6.89inch)
	Total Height	175mm (6.89inch)
Approx. Weight		9.60kg (21.16lbs)
Maximum charging current		8.4A
Maximum discharge current		310A (5sec.)
Internal resistance		Approx. 8mΩ
Capacity affected by temperature (20hr)	40°C	103%
	25°C	100%
	0°C	86%
	-15°C	65%
Self-discharge (25°C)	3 month	Remaining Capacity: 91%
	6 month	Remaining Capacity: 82%
	12 month	Remaining Capacity: 65%
Nominal operating temperature		25°C ±3°C (77°F±5°F)
Operating temperature range		-20°C~55°C (-4°F~131°F)
Float charging voltage (25°C)		13.65 to 13.80V
Cyclic charging voltage (25°C)		14.40 to 15.00V
Terminal material		Copper

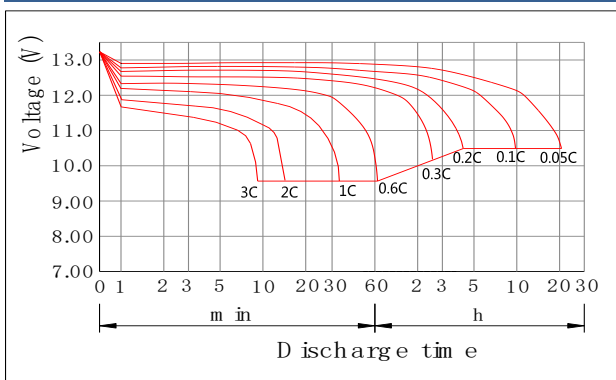
The Relationship for Charging Voltage and Temperature



Charging Characteristics (25°C)



Discharge Characteristics (25°C)



Constant Current Discharge Characteristics (Ampere / Battery, 25°C)

FV / TIME	5min	10min	15min	20min	30min	45min	1h	2h	3h	4h	5h	6h	8h	10h	20h
10.98V	95,06	68,24	53,05	43,17	33,30	23,91	19,20	11,17	8,51	6,72	5,63	4,88	3,92	2,41	1,32
10.80V	98,20	70,50	54,80	44,60	34,40	24,70	19,80	11,54	8,79	6,95	5,82	5,04	4,06	2,60	1,40
10.50V	103,00	73,20	56,80	46,10	35,30	25,30	20,30	11,85	9,03	7,15	5,99	5,20	4,18	2,82	1,49
10.20V	110,00	78,00	60,30	48,90	37,40	26,70	21,40	12,52	9,54	7,55	6,33	5,50	4,43	3,01	1,60
10.02V	117,00	82,70	63,80	51,70	39,60	28,10	22,40	13,13	10,01	7,93	6,65	5,78	4,66	3,19	1,71
9.60V	125,00	87,50	67,30	54,50	41,70	29,60	23,50	13,79	10,53	8,34	7,00	6,09	4,91	3,38	1,83

Constant Power Discharge Characteristics (Watt / Battery, 25°C)

FV / TIME	5min	10min	15min	20min	30min	45min	1h	2h	3h	4h	5h	6h	8h	10h	20h
10.98V	1103,52	766,66	592,42	479,74	367,07	275,30	224,77	126,32	94,37	76,42	65,41	56,42	44,28	28,28	15,49
10.80V	1140,00	792,00	612,00	495,60	379,20	284,40	232,20	130,73	97,76	79,18	67,80	58,51	45,93	30,51	16,43
10.50V	1200,00	828,00	636,00	514,80	393,60	294,00	239,40	135,02	101,27	81,87	70,14	60,57	47,64	33,10	17,49
10.20V	1260,00	864,00	660,00	534,00	407,40	304,20	246,60	139,33	104,56	84,58	72,50	62,61	49,32	35,33	18,78
10.02V	1314,00	894,00	690,00	552,60	421,80	313,80	253,80	143,65	107,87	87,31	74,87	64,72	51,01	37,44	20,07
9.60V	1374,00	930,00	708,00	571,80	435,60	323,40	261,00	147,99	111,19	90,05	77,26	66,82	52,72	39,67	21,48