

# **Wireless Professional**

## **Quick Start Manual**



### Contents

<b>1</b>	<b>Mounting Instructions for Wireless Professional-Emergency Luminaires .....</b>	<b>3</b>
<b>2</b>	<b>Instructions for Installation with a PC provided by the Customer.....</b>	<b>3</b>
<b>3</b>	<b>Quick Start Wireless Professional .....</b>	<b>4</b>
3.1	Commissioning and Login .....	4
3.2	Login Levels.....	5
3.3	Reset Password .....	5
3.4	Configure Groups.....	6
3.5	Group View .....	8
3.6	Error list.....	8
<b>4</b>	<b>Overview: System Status .....</b>	<b>9</b>
<b>5</b>	<b>Overview: System Error Messages .....</b>	<b>10</b>
<b>6</b>	<b>Revision history.....</b>	<b>10</b>
<b>7</b>	<b>Contact information .....</b>	<b>11</b>

### 1 Mounting Instructions for Wireless Professional Emergency Luminaires

Besides the mounting instructions each luminaire is provided with, please obey the following instructions when mounting all luminaires which are operated in a Wireless Professional radio system:

1. The L' bridge is only needed with maintained luminaires, which are not switchable via Wireless Professional Software. If the L' bridge is connected to a luminaire which is switchable via Wireless Professional, the switch signal transmitted by the Wireless Professional Software gets cancelled. Furthermore, it is no longer possible to change the operation mode of the luminaire by means of the Wireless Professional Software.
2. When inserting the electronics carrier into a mounted luminaire housing, make sure that the addresses on the electronics carrier match with those on the luminaire housing.
3. Do not damage the antenna of the radio module when assembling the luminaire. Do not stick the antenna to the housing either. A metal housing can lead to a damage of the electronics.
4. The charging control LED of the luminaire must light up after a successful installation and switching on the supply voltage.
5. If the LED does not light up, the battery is not charged resulting in a incorrect test.
6. In some cases the luminaires signal a battery failure directly after the installation. This happens if the batteries are only partly charged. Some time of charging should reset this error.
7. An endurance test of Wireless Professional emergency luminaires can only be carried out at least 20 hours after the last mains break (mains failure, fuse failure, endurance test).
8. Luminaires described as "processor-controlled emergency luminaire" or as luminaire with "integrated SelfControl-Monitoring" have a block function, which blocks the execution of function and endurance tests as long as the battery has not yet been charged to the necessary cut-off voltage. If such luminaires are integrated in your radio system, you will have to wait a respectively long time (charging time) before you can carry out a test.

### 2 Instructions for Installation with a PC provided by the Customer

If the operator of the building provides a PC on which the Wireless Professional Software is intended to run, the following instructions have to be obeyed when setting up the PC.

1. The user account requires administrator rights for the Wireless Professional programme folder. The Wireless Professional Software must be able to read, write, overwrite and manage data.
2. In the user account, where the Wireless Professional Software is to be installed, the software requires the right to install a driver on the PC.  
The USB-Coordinator needs a separate driver, which is provided with the Wireless Professional Software.
3. The energy saving options have to be configured so that the PC does not switch to sleep mode, standby mode or shuts down on its own.

Recommended energy saving options:

- Switch off hard disk : never
- Sleep mode : never
- Standby mode : never
- Shut down : never
- Dim screen : after 2 minutes
- Switch off screen : after 5 minutes

**Caution:** If the computer is frozen, has switched to sleep mode or standby mode, the emergency lighting is no longer managed and the automatic test function is no longer active.

4. Windows updates should not be installed automatically as this can lead to an automatic reboot of the PC.
5. All automatic updates of other programmes should be deactivated as they can also lead to an automatic system reboot.
6. If you wish to use the error transmission by e-mail, make sure that your anti-virus software or your firewall do not block the transmission.

When using built-in PCs in closed control cabinets or when PCs are placed in closed metal cabinets, it may be necessary to place the coordinator externally.

The use of a USB-Hub between the PC and the USB-Coordinator can cause misleading error messages in the Wireless Professional Software.

If the USB-Coordinator is connected to a USB-to-Ethernet-Bridge, errors in the Wireless Professional Software can occur.

### 3 Quick Start Wireless Professional

The Wireless Professional System, consisting of central unit (PC) with USB-Coordinator and monitoring software, is a system in compliance with EN 60598-2-22, VDE 0711 Part 2-22 as well as DIN EN 62034, VDE 0711-400.

#### 3.1 Commissioning and Login

Start the PC by means of the main power switch for commissioning the system. After booting the PC an automatic login (Autologin) to the user account "Wireless" takes place. 3 user accounts are pre-configured; you can change the user account via the start menu. Distributors have a user account of their own.

**Note:** The preset password for logging in to the user account "Wireless" is "0000" and must not be changed as otherwise the Autologin would not work anymore.

**Note:** After commissioning a data backup is to be made! (Copy of the folder "WirelessProfessional" to hard disk C: create and save externally)

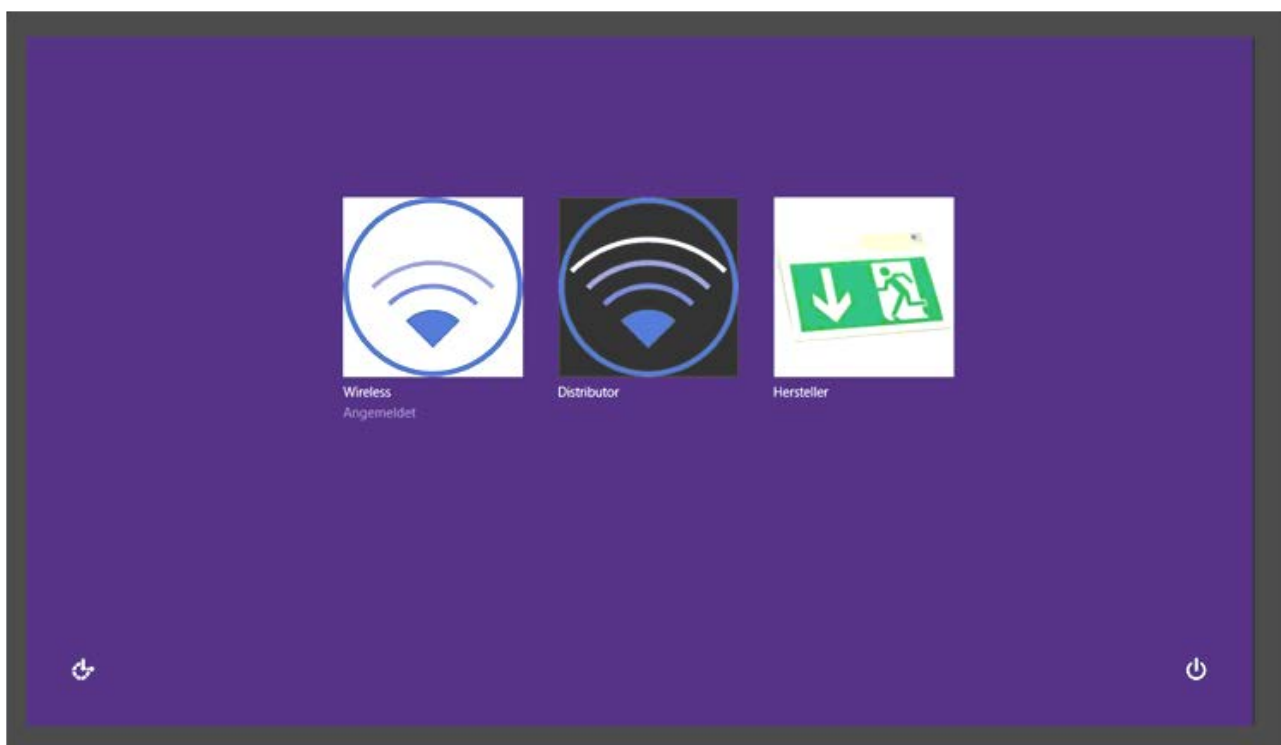


Figure 1: PC-Start Screen

The Wireless Professional Software starts automatically together with Windows.

Now plug in the provided USB-Coordinator to one of the USB-ports. The message in the title bar of the window should change from "not connected" to "connected and running" (fig. 2).

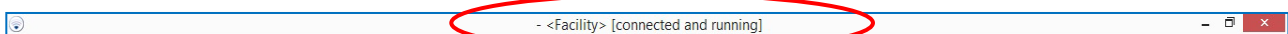


Figure 2: Title Bar, Status "connected and running"

If 1 minute after plugging in the USB-Coordinators the title bar still shows "not connected", please follow the procedure as described in chapter 3.2.

### 3.2 Login-Levelsn

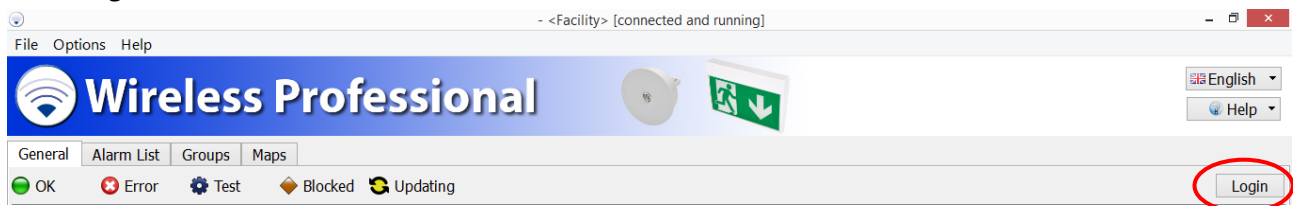


Figure 3: Login Button

The installation area can be reached via Login button (fig. 3). The default password is "2222" and it should be changed upon setting up the system. The password can be changed on the tab page "Installation" on the tab "System" (fig. 4).

If the USB-Coordinator is not detected automatically, select the ComPort of the Coordinators via "Serial Interface" on this page.

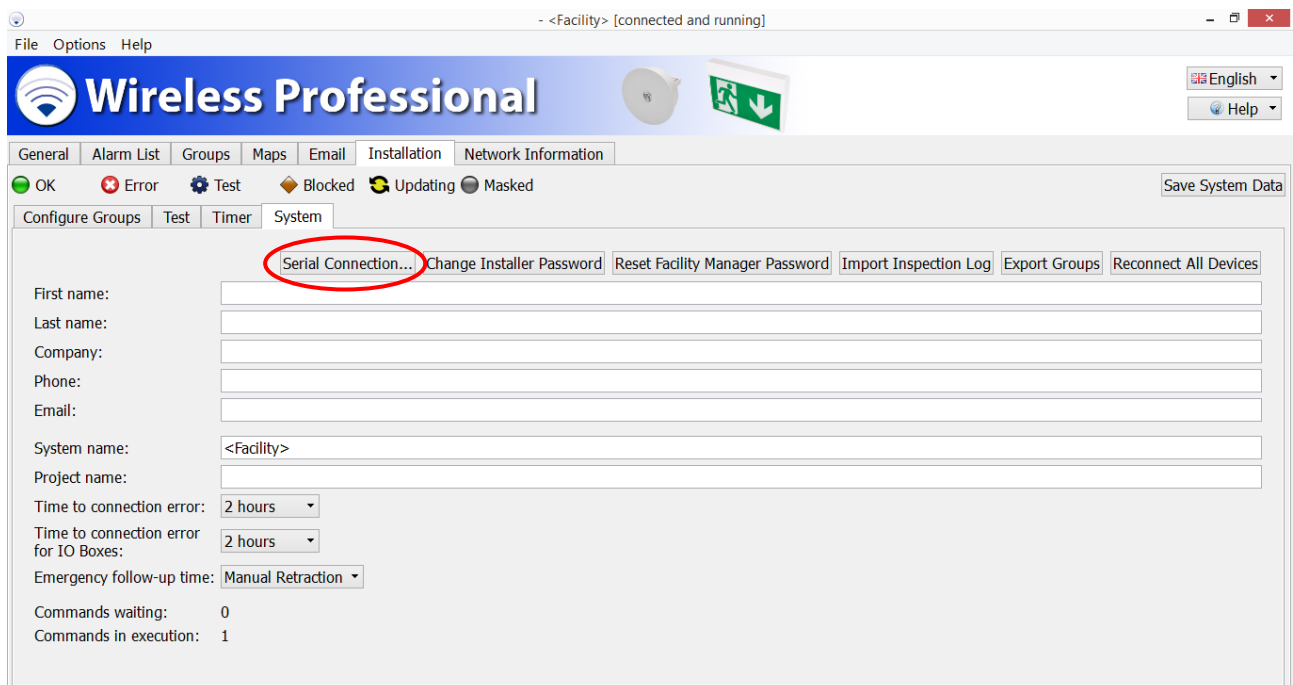


Figure 4: Tab page "Installation"

### 3.3 Reset Password

Should you forget your password for the Wireless Professional Software, please contact your distributor who can reset the password.

The operator of the building has an own user level which is reachable with the default password "1111". This password should also be changed by the building operator after the system has been handed over via tab page "E-mail".

### 3.4 Configure Groups

The installed Wireless Professional luminaires can be allocated to the system on the tab page "Installation" on the tab "Configure Groups".

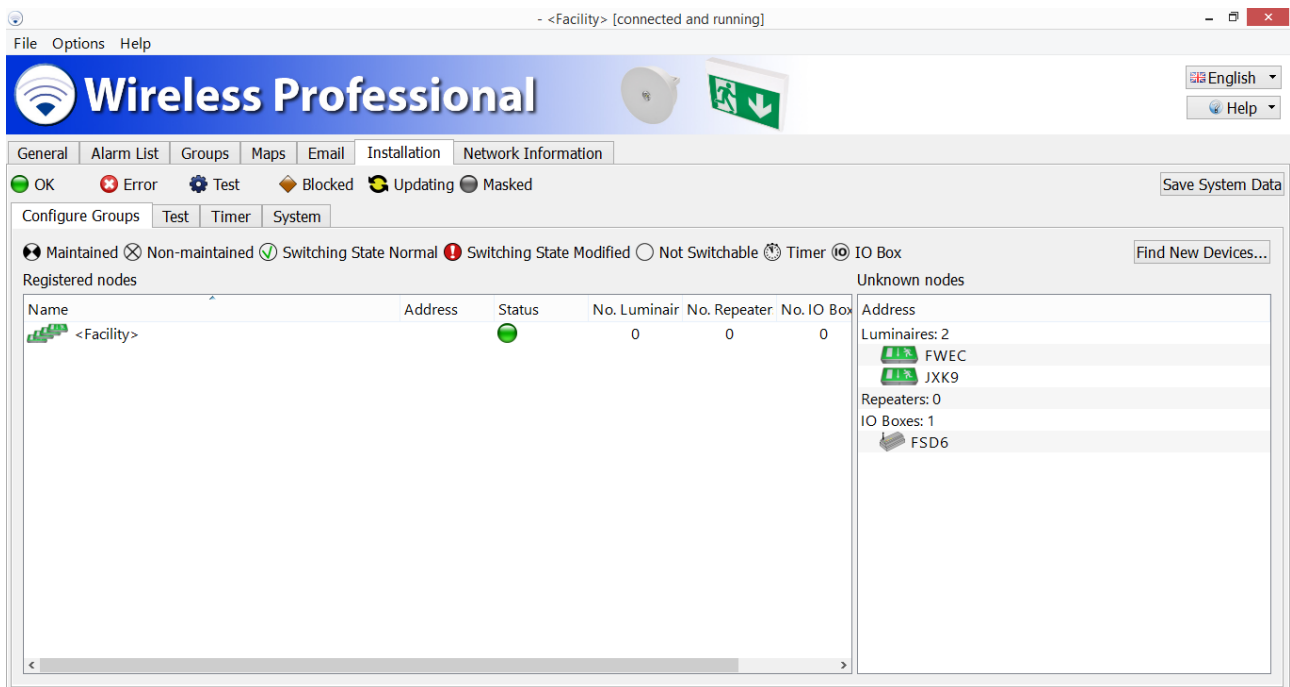


Figure 5: Installation, Configure Groups with open context menu

Groups can be set up via context menu on the left-hand side in the list "Installed Nodes", in which the devices from the right-hand side (list "Unknown Nodes") can be integrated through Drag & Drop and thus registered (fig. 5).

If the number of devices shown on the right-hand side (list "Unknown Nodes") is lower than the actually existing devices, a search run can be started via button "Search for new devices". After pushing the button, further devices are shown. Those belonging to the system should then be allocated.

#### Commissioning Procedure

1. Switch on the device
2. Select interface
3. Search for devices
4. Register devices
5. Save system
6. If not all devices found, repeat from step 3

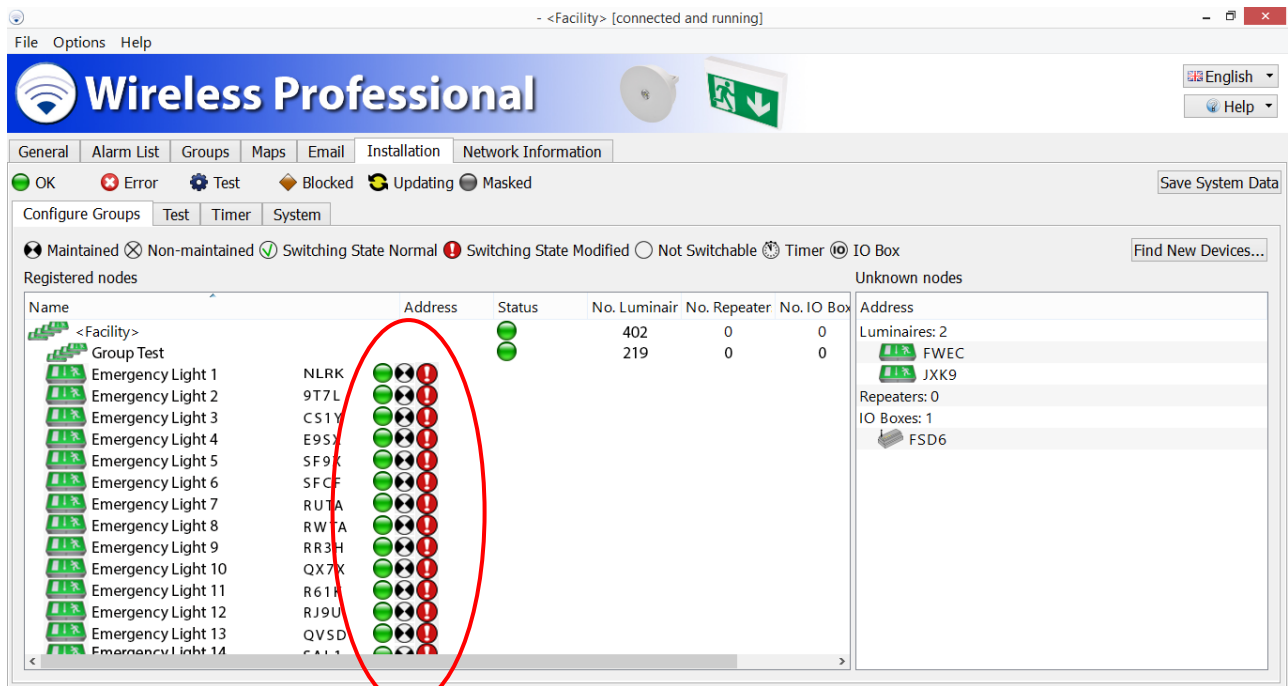


Figure 6: Installation, Configure group with allocated luminaires

If a luminaire has been allocated to the system, it appears in the list "installed nodes" shown by a yellow symbol. The luminaire now logs on to the system. The symbol changes to green as soon as the system has registered the luminaire. Once the luminaires are allocated to a system, they can neither be seen nor used by other systems.

### 3.5 Group View

Registered luminaires can be seen in the group view (fig. 7) and they can also be switched separately or in groups from there. Luminaires can be blocked or tested via the context menu of single luminaires or groups.

No.	Name	Status	No. Luminair	No. Repeater	No. IO Boxes	Maintained L	Non-maintai
	<Facili... Group		402	0	0	On	Off
			219			On	Off

No.	Name	Address	Status	Operation M	Position	Device Type	Switch Lumir
1	Emerg...	NLRK		Maintained Light		KMU003	On Off
2	Emerg...	9T7L		Maintained Light		KMU003	On Off
3	Emerg...	CS1Y		Maintained Light		KMU003	On Off
4	Emerg...	E9SX		Maintained Light		KMU003	On Off
5	Emerg...	SF9X		Maintained Light		KMU003	On Off
6	Emerg...	SFCF		Maintained Light		KMU003	On Off
7	Emerg...	RUTA		Maintained Light		KMU003	On Off
8	Emerg...	RWTA		Maintained Light		KMU003	On Off
9	Emerg...	RR3H		Maintained Light		KMU003	On Off

Figure 7: Group view with installed luminaires

### 3.6 Error List

All current error messages of the system are shown on the page "Error List". Furthermore, function tests and endurance tests can be started and log files can be viewed from this page.

Name	Address	Status
------	---------	--------











Figure 8: Group view with installed luminaires



### 4 Overview System Status

On the general tab page of the Wireless Professional Software the status of the radio communication system is indicated by a colour dot and a text message.

Each colour can be associated with several different messages.

Symbol	Message	Meaning
	System is being started	The system is starting and checks whether all radio components can be reached.
	Updating	The status of components is being updated/changed.
	Device not allocated	Radio components are being connected to the system
	Ready to operate	Radio components are allocated to the Wireless Professional System
		The system was switched to this status by the "Activate" function.
	Standby	The system is working but no radio components have been allocated to it yet.
		The system was switched to this status by the "Energy Save" function.
	Error on X devices	One or more devices are reporting an error status.
	Starting test on X devices	A test is started on all devices consecutively.
	Testing	One or more devices are currently being tested.
	Finishing test on X devices	A test on one or more devices has been completed and test results are being retrieved.
	Blocked	The emergency lighting function of the radio components is "blocked".

### 5 Overview: System Error Messages

The error list of the Wireless Professional Software shows all radio components which are reporting an error status. Each component is listed with its error message.

Error Message	Meaning	Cause
Invalid device	A device with unknown type ID is trying to register.	A new device has been added (occurs when new devices are added to an existing system).
Connection lost	Radio communication with a component has been lost.	The radio component is in emergency operation mode. (possibly no mains voltage)
		The radio communication to the component is disturbed.
Battery error	The battery voltage lies outside the allowed tolerance range.	The battery is not connected.
		Wrong battery type.
		battery low or deep discharge of battery This can happen with newly connected luminaires.
		Battery is defect.
Last test failed: Connection lost.	The luminaire could not be reached at the time of test execution or after the test.	See "Connection lost".
Last test failed: Battery error	The test was executed and a battery defect was detected.	The battery did not supply enough power over the testing time (This problem may occur in capacity and function tests; it can also occur when luminaire batteries have not been sufficiently charged after installation).
		See "Battery error".
Last test failed: Illuminant error.	The test was executed and an illuminant defect was detected.	An illuminant error was detected (e.g. if the battery has not been charged sufficiently prior to installation).

### 6 Revision history

Wireless Professional – Installation and Software Operation		
Date	Software-Version / Revision	Comment / Important changes compared to previous version
05.10.2012	1.0	established
01.07.2014	1.1	updated
09.11.2015	1.2	updated
07.04.2016	2.0	updated
27.02.2017	2.0.1	Note data backup after commissioning



