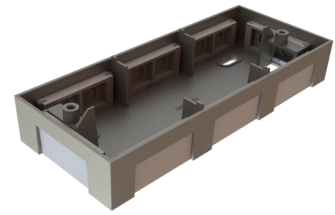


## Art.-Nr: AM-X-APA Surface-mounted adapter AM/AX

Adapter with cable entries on all sides, for simple installation with surface-mounted wiring. Available in white, anthracite and a stainless steel look.



More information

[www.rp-group.com/en/item/AM-X-APA](http://www.rp-group.com/en/item/AM-X-APA)

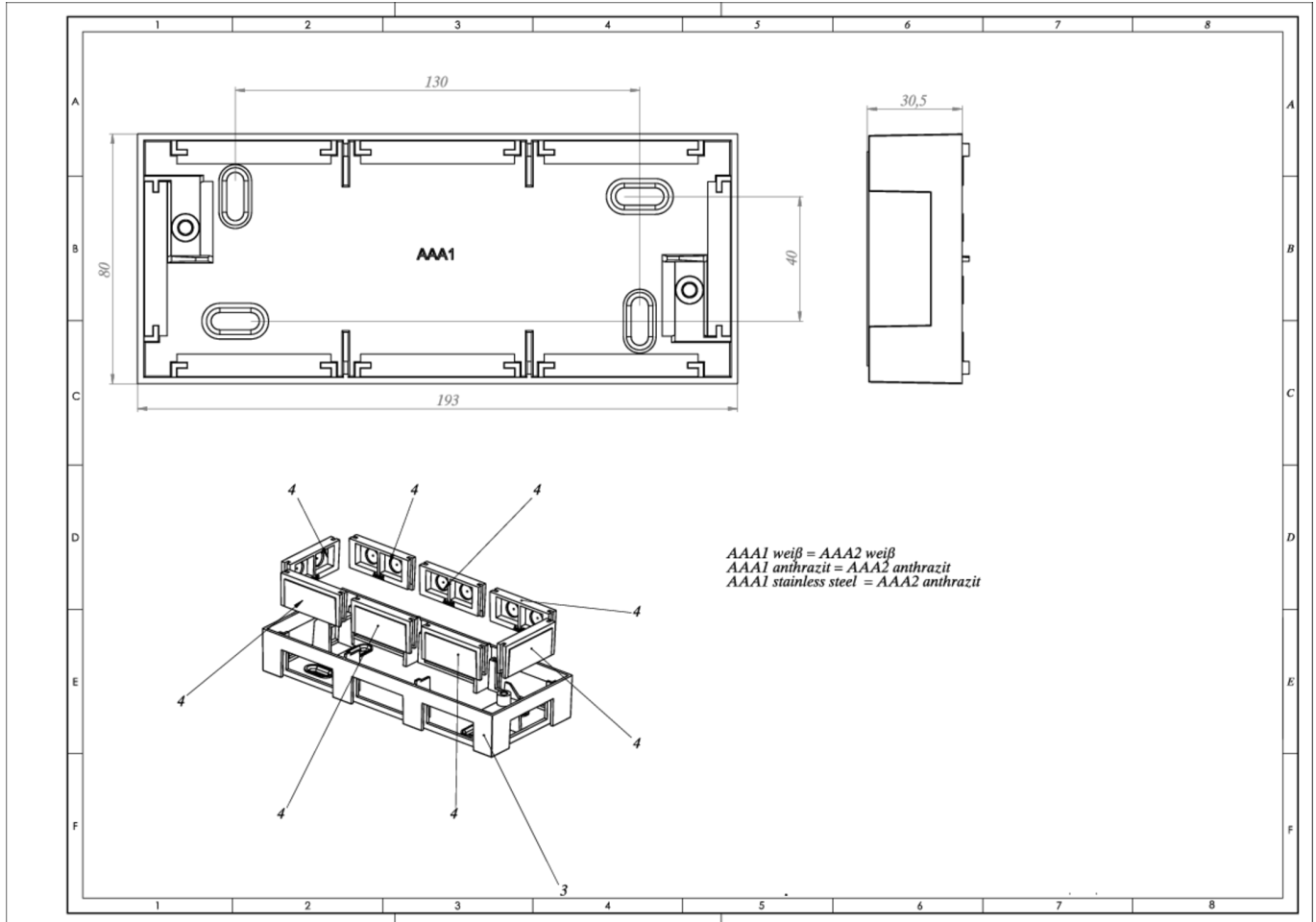


### TECHNICAL DATA

Depth	80 mm
Width	193 mm
Height	30.5 mm
Weight	0.63 kg
Customs tariff number	94059200
EAN	4260581714857



TECHNICAL DRAWING



As of: 09.04.2025 - Subject to technical changes and errors.