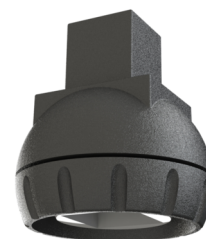




## Art.-Nr: AM-X-PKG-WS

Ball joint for all luminaires with a square pendant (OLED, A series), compensates for sloping ceilings up to an incline of 23°. This allows emergency exit sign luminaires to still be mounted straight and in line with the applicable standards.

The practical ball joint is mounted between the pendant and the luminaire's seat on the ceiling. Available in white, anthracite and a stainless steel look.



More information

[www.rp-group.com/en/item/AM-X-PKG-WS](http://www.rp-group.com/en/item/AM-X-PKG-WS)



### TECHNICAL DATA

Depth	25 mm
Width	25 mm
Height	20 mm
Weight	0.04 kg
Customs tariff number	94059900
EAN	4260659566760

As of: 09.04.2025 - Subject to technical changes and errors.