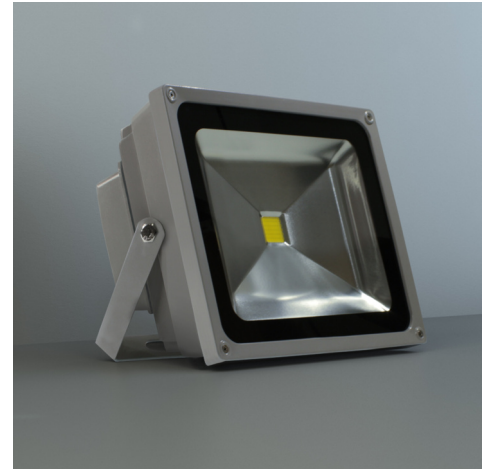




Art.-Nr: FL55NW
General light, Emergency light Centralised power supply systems
Wall mounting, Without monitoring, CPS, , IP65, Zinc die-cast, Light grey

Practical floodlight, which is suited to indoor and outdoor areas with its high IP65 protection class and coated aluminium housing. Thanks to the wide beam angle, large areas can be illuminated with ease. Individual luminaire monitoring can be achieved with an additional, externally fitted DCBLU05 or MU04 monitoring module.



More information
www.rp-group.com/en/item/FL55NW



TECHNICAL DATA

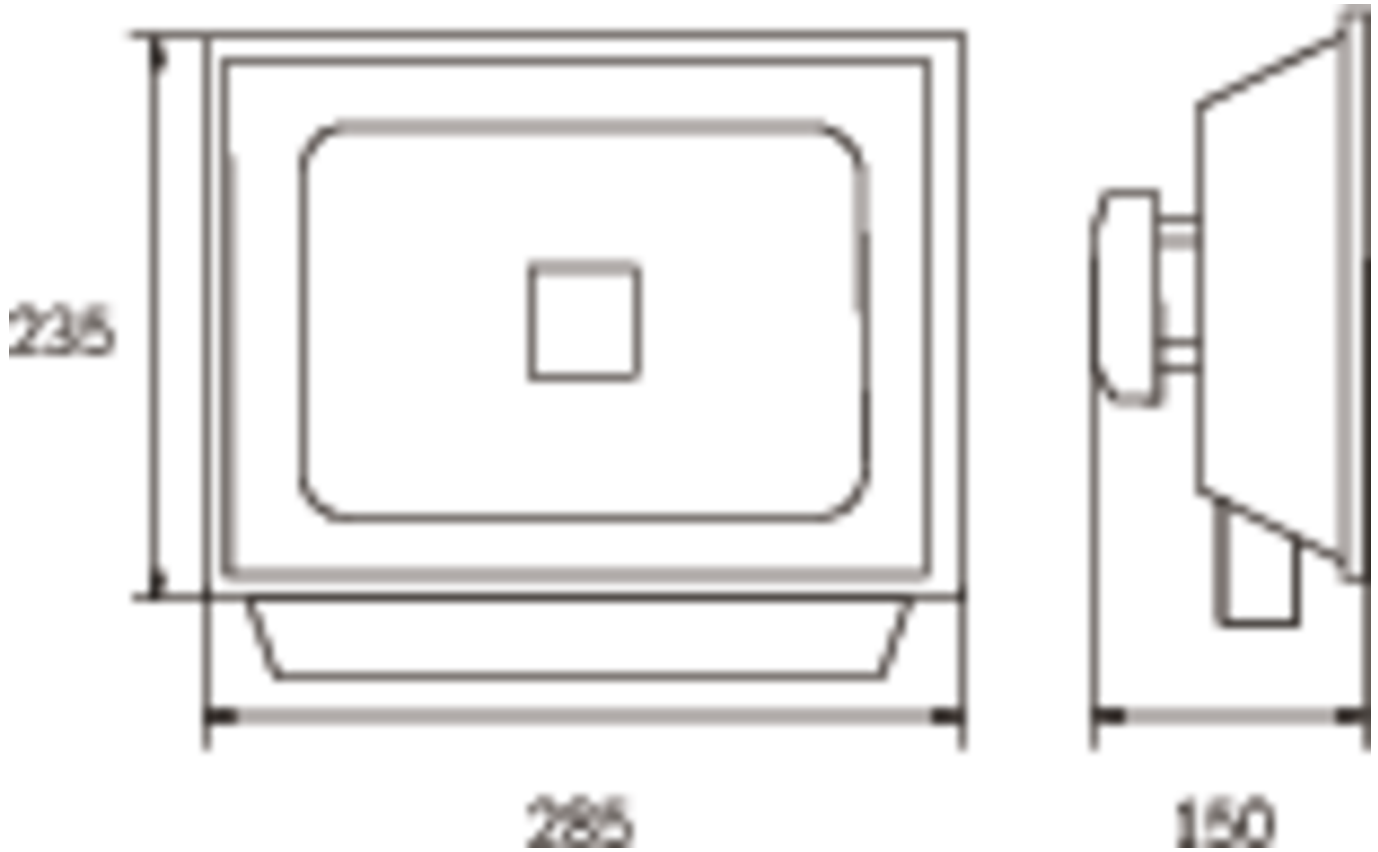
Luminaire type	General light, Emergency light
Mounting	Wall mounting
Pictograph	No
Illuminant	LED
Housing material	Zinc die-cast
Housing color	Light grey
Protection type (IP)	IP65
Impact resistance (IK)	7
Certification	WEEE, CE
Insulation class	1
Supply	Centralised power supply systems
Monitoring	Without monitoring
Bridging time	CPS
Battery	/
Operating mode	Non-maintained
Input voltage AC	230 V
Input frequency	50 / 60 Hz
Input voltage DC	216 V



Power max.	54,7 W
Power maintained	54,7 W
Power non-maintained	54,7 W
Ambient temperature maintained mode	-25 °C to 35 °C
Ambient temperature non-maintained mode	-25 °C to 40 °C
Depth	285 mm
Width	150 mm
Height	235 mm
Weight	8.21
Weight incl. packaging	8.28
Switching input	Yes
Emergency light blocking	No
Battery connection	No
Dimming function	No
Luminous flux mains	4200 lm
Luminous flux emergency	4200 lm
Customs tariff number	94054210
EAN	4260581710316



TECHNICAL DRAWING



RELATED PRODUCTS

Art.-No.	Image	Monitoring	Supply	Color	Investment	Automatic log	Maintenance level	Remote maintenance	max. luminaires	Single luminaire monitoring
----------	-------	------------	--------	-------	------------	---------------	-------------------	--------------------	-----------------	-----------------------------

As of: 17.05.2025 - Subject to technical changes and errors.