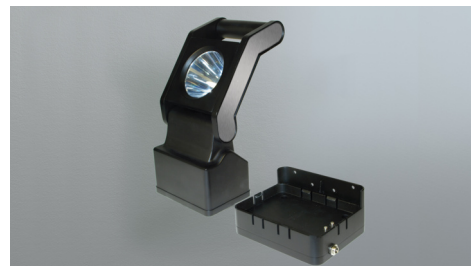




**Art.-Nr: HX**  
**Emergency light**  
**Wall mounting, Without monitoring, 3 h, , IP54,**  
**Polycarbonate, Black**

LED safety light in accordance to DIN EN 60598-1, DIN EN 60598-2-22 and DIN EN 1838. Rechargeable portable spotlight with 3W Power LED and magnetic base, for flexible mounting on metals e.g. control cabinets. In case of a power failure the emergency light function switches on automatically. The luminaire head can be swivelled backwards by 110° and forwards by 70°. Includes a flashing and dimming feature for longer burning periods. Wall bracket with charging function, 230V power supply unit (optional 12V vehicle charger).



More information  
[www.rp-group.com/en/item/HX](http://www.rp-group.com/en/item/HX)



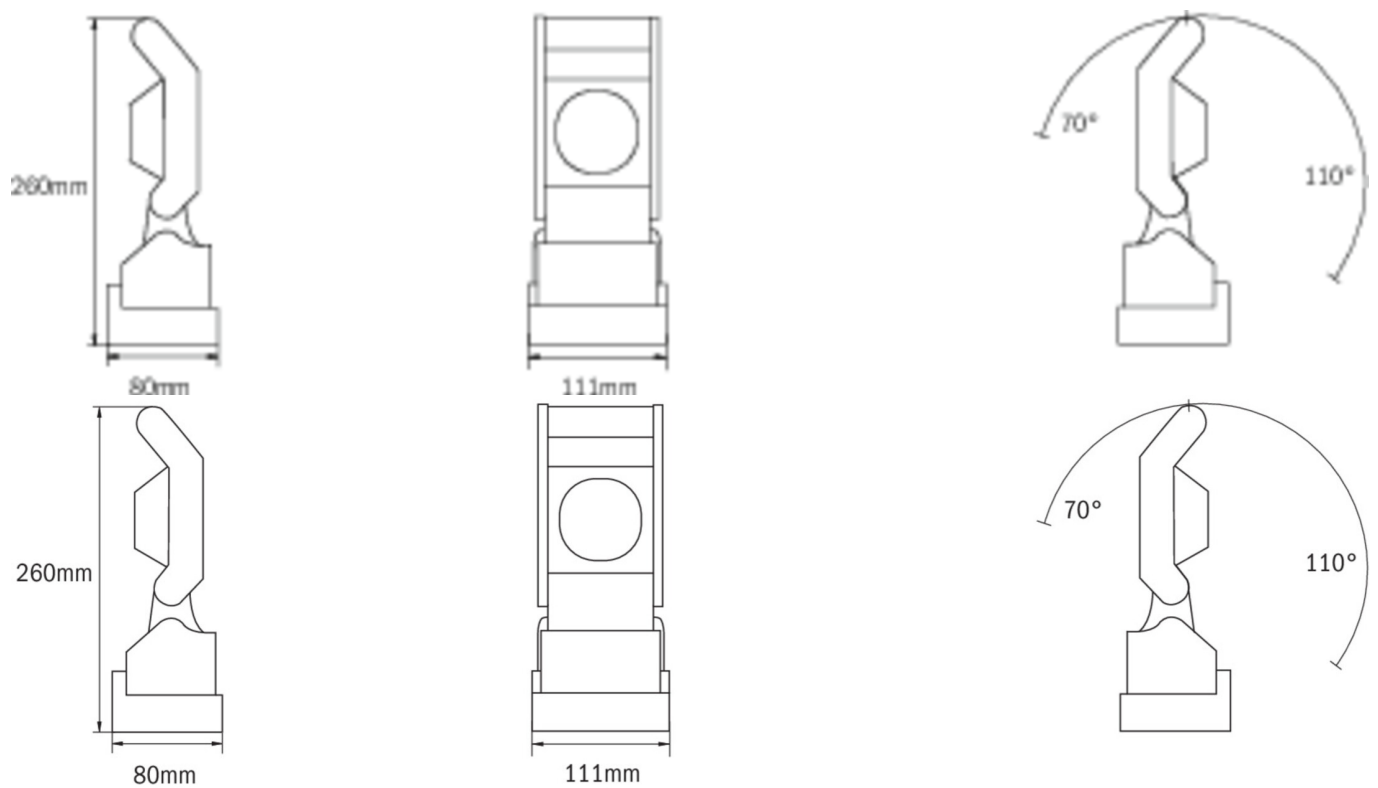
## TECHNICAL DATA

Luminaire type	Emergency light
Mounting	Wall mounting
Pictograph	No
Illuminant	LED
Housing material	Polycarbonate
Housing color	Black
Protection type (IP)	IP54
Impact resistance (IK)	≥ 3
Certification	WEEE, CE
Insulation class	2
Monitoring	Without monitoring
Bridging time	3 h
Battery	LiFePO4 7,4 V/
Power max.	3 W
Ambient temperature maintained mode	0 °C to 40 °C
Ambient temperature non-maintained mode	0 °C to 40 °C
Depth	104 mm
Width	130 mm
Height	300 mm



Weight	0.97
Weight incl. packaging	1.16
Luminous flux mains	180 lm
Luminous flux emergency	180 lm
Customs tariff number	85131000
GTIN	4260349824293

## TECHNICAL DRAWING



## ACCESSORY LIST

HXNT12 -  
HXOSD -  
HXACC - HX Battery

As of: 14.12.2025 - Subject to technical changes and errors.