



Art.-Nr: ILDE-SW
Mounting frame
Mounting frame, plastic black

Mounting frame with clamping springs and strain relief, for holding all versions of the ILD. Plastic material, black RAL 9005. This accessory can be used to fit in the ceiling all variants of the ILD safety luminaire, which is designed as a luminaire for mounting on the ceiling surface.

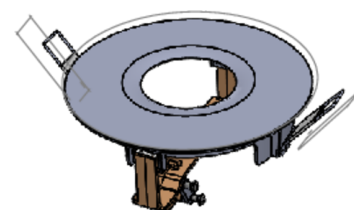
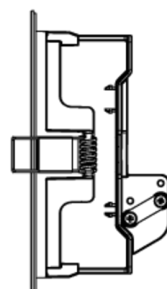
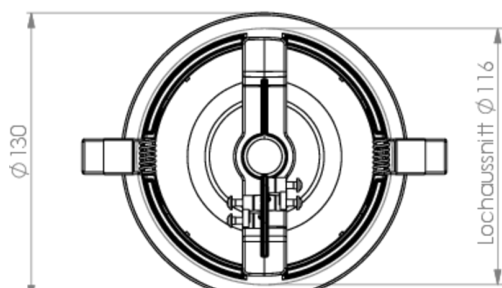
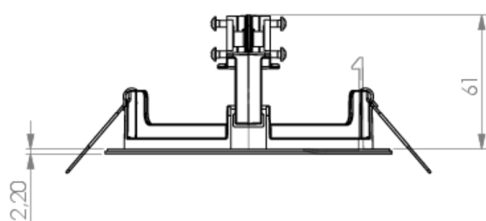


More information
www.rp-group.com/en/item/ILDE-SW

TECHNICAL DATA

Depth	130 mm
Width	130 mm
Height	62 mm
Weight	0.07 kg
Customs tariff number	94059200
EAN	4260766552564

TECHNICAL DRAWING



As of: 15.04.2025 - Subject to technical changes and errors.