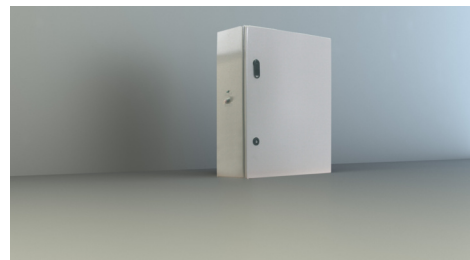




## Art.-Nr: NVGS1051WL Individual battery supply

Self-contained battery supply with output voltage 230V/AC sine voltage, 2 wire system up to 500m distance. for supply of 1 or 2 luminaires with fluorescent lamps, light bulbs or LED illuminants at 100% luminous flux.

Technical specifications according to DIN - VDA 0108-100 and DIN EN 60598 - 2 - 22. With deep discharge protection and integrated switch - on lock, threshold switch. The supply is handled by a maintenance-free, long life and gas-proof Pb rechargeable battery. The fully electronic and time controlled charging ensures an extended battery life. The LED function and monitoring display shows operating states and faults. A manual activation of a function test is possible through the built-in test button.



More information  
[www.rp-group.com/en/item/NVGS1051WL](http://www.rp-group.com/en/item/NVGS1051WL)



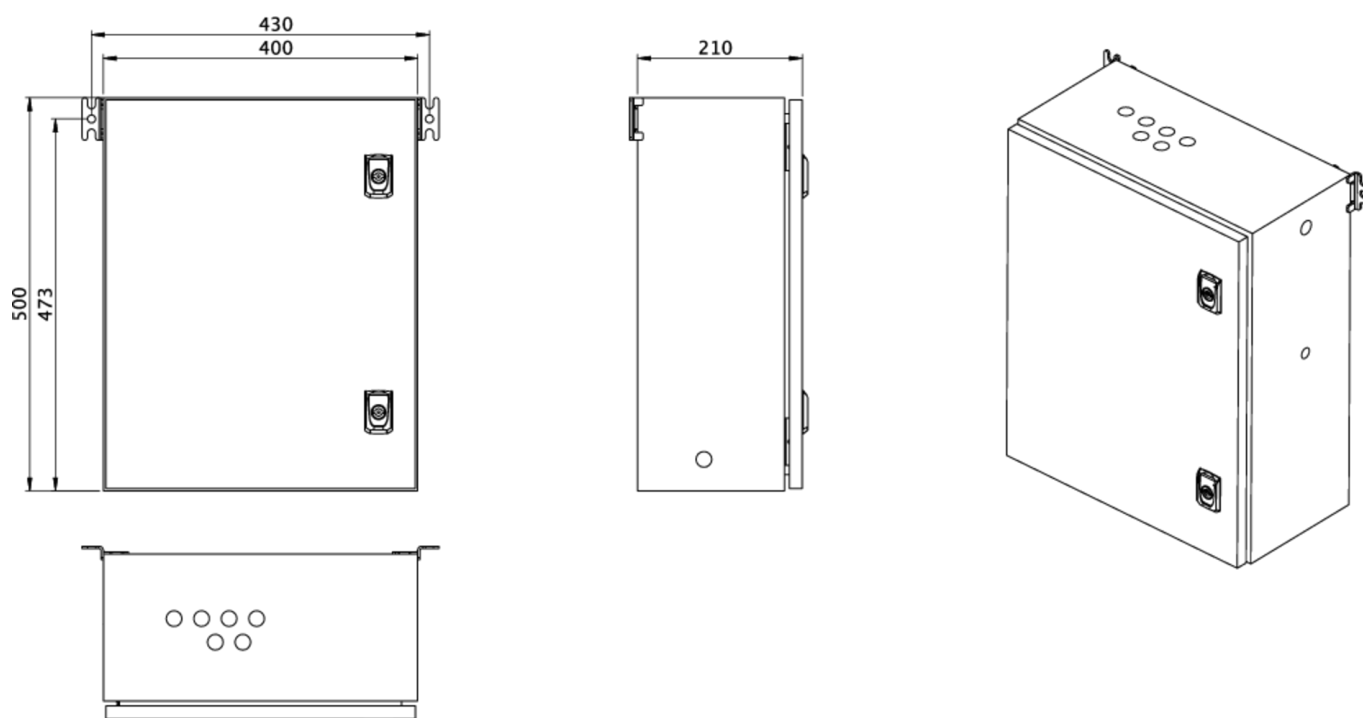
### TECHNICAL DATA

Inserts	- pcs.
Number of circuits	2
Loader	Yes
Modules SAM	No
IO modules	No
CCIF	No
Connectable	No
Outgoing UPS	No
Battery compartment	Yes
Supply power 1 h	105 W
Input voltage AC	230 V
Input frequency	50 / 60 Hz
Output voltage AC	230 V
Material	Steel sheet
Housing color	Light grey
Insulation class	IP54
Depth	210 mm
Width	400 mm



Height	500 mm
Weight	18 kg
Weight incl. packaging	18 kg
Customs tariff number	85389091

## TRANS.MASSZEICHNUNG



As of: 09.04.2025 - Subject to technical changes and errors.