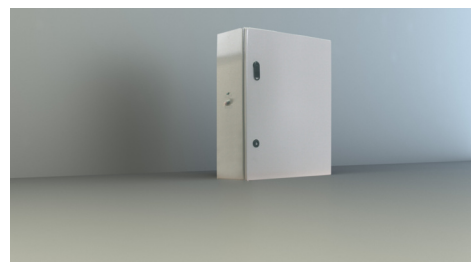




## Art.-Nr: NVGS1051WLSE Individual battery supply

Self-contained battery supply with output voltage 230V/AC sine voltage, 2 wire system up to 500m distance. for supply of 1 or 2 luminaires with fluorescent lamps, light bulbs or LED illuminants at 100% luminous flux.

Technical specifications according to DIN - VDA 0108-100 and DIN EN 60598 - 2 - 22. With deep discharge protection and integrated switch - on lock, threshold switch. The supply is handled by a maintenance-free, long life and gas-proof Pb rechargeable battery. The fully electronic and time controlled charging ensures an extended battery life. The LED function and monitoring display shows operating states and faults. A manual activation of a function test is possible through the built-in test button.



More information  
[www.rp-group.com/en/item/  
NVGS1051WLSE](http://www.rp-group.com/en/item/NVGS1051WLSE)



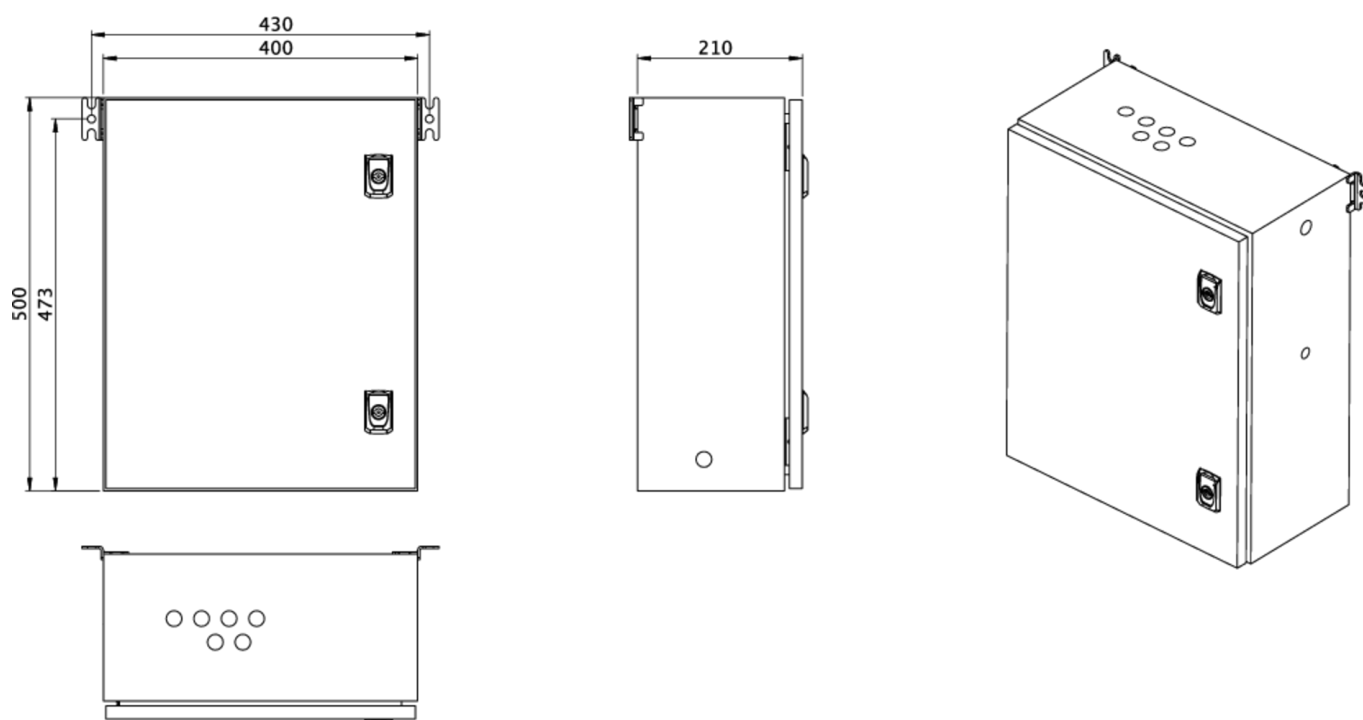
### TECHNICAL DATA

|                     |             |
|---------------------|-------------|
| Inserts             | - pcs.      |
| Number of circuits  | 2           |
| Loader              | Yes         |
| Modules SAM         | No          |
| IO modules          | No          |
| CCIF                | No          |
| Connectable         | No          |
| Outgoing UPS        | No          |
| Battery compartment | Yes         |
| Supply power 1 h    | 105 W       |
| Input voltageAC     | 230 V       |
| Input frequency     | 50 / 60 Hz  |
| Output voltage AC   | 230 V       |
| Material            | Steel sheet |
| Housing color       | Light grey  |
| Insulation class    | IP54        |
| Depth               | 210 mm      |
| Width               | 400 mm      |



|                        |          |
|------------------------|----------|
| Height                 | 500 mm   |
| Weight                 | 18 kg    |
| Weight incl. packaging | 18 kg    |
| Customs tariff number  | 85389091 |

## TRANS.MASSZEICHNUNG



As of: 09.04.2025 - Subject to technical changes and errors.