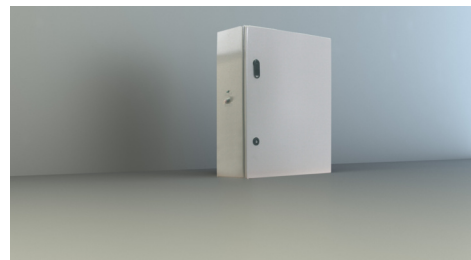




## Art.-Nr: NVGS508WL Individual battery supply

Self-contained battery supply with output voltage 230V/AC sine voltage, 2 wire system up to 500m distance. for supply of 1 or 2 luminaires with fluorescent lamps, light bulbs or LED illuminants at 100% luminous flux.

Technical specifications according to DIN - VDA 0108-100 and DIN EN 60598 - 2 - 22. With deep discharge protection and integrated switch - on lock, threshold switch. The supply is handled by a maintenance-free, long life and gas-proof Pb rechargeable battery. The fully electronic and time controlled charging ensures an extended battery life. The LED function and monitoring display shows operating states and faults. A manual activation of a function test is possible through the built-in test button.



More information  
[www.rp-group.com/en/item/NVGS508WL](http://www.rp-group.com/en/item/NVGS508WL)



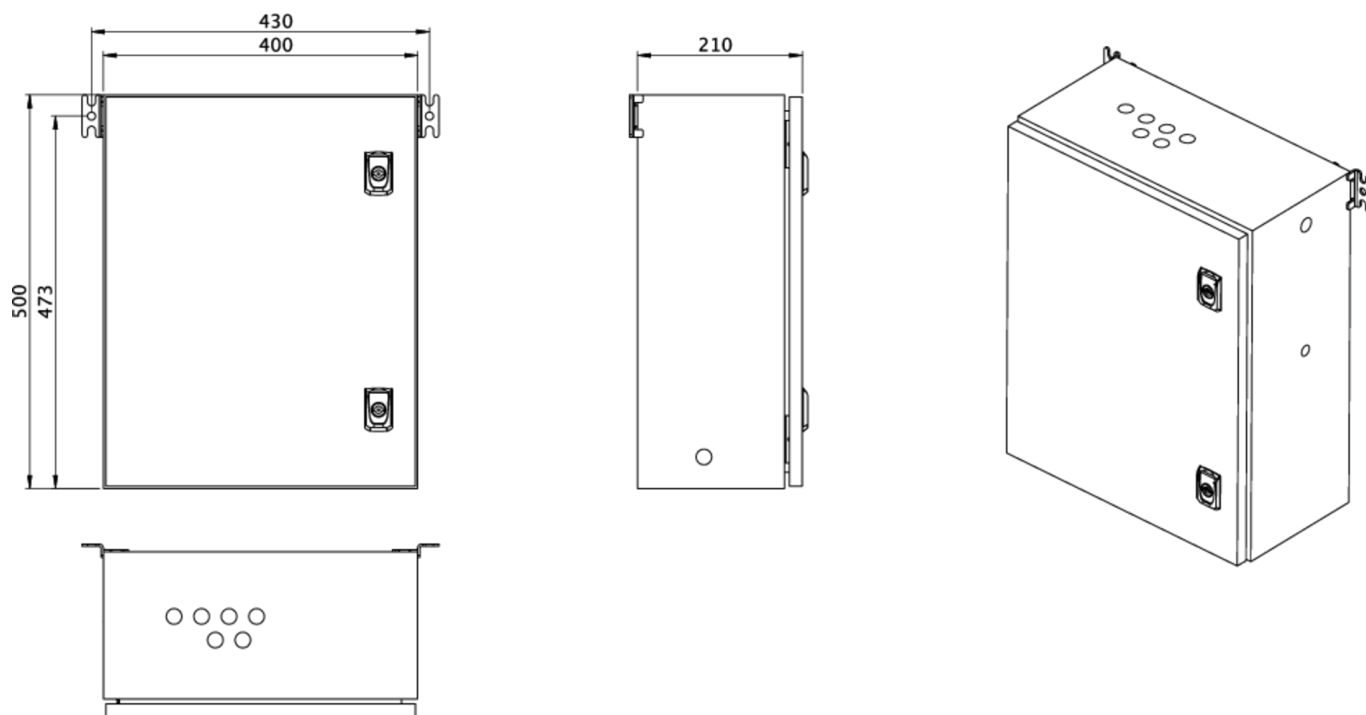
### TECHNICAL DATA

Inserts	- pcs.
Number of circuits	2
Loader	Yes
Modules SAM	No
IO modules	No
CCIF	No
Connectable	No
Outgoing UPS	No
Battery compartment	Yes
Supply power 8 h	50 W
Input voltage AC	230 V
Input frequency	50 / 60 Hz
Output voltage AC	230 V
Material	Steel sheet
Housing color	Light grey
Insulation class	IP54
Depth	210 mm
Width	400 mm



Height	500 mm
Weight	kg
Customs tariff number	85389091

## TRANS.MASSZEICHNUNG



As of: 09.04.2025 - Subject to technical changes and errors.