

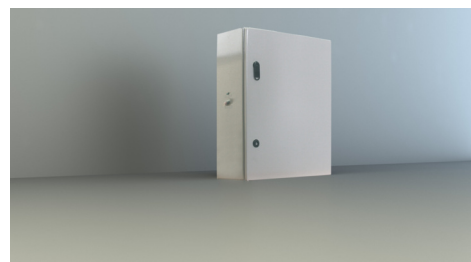


**Art.-Nr: NVGS653WLSE**  
**Individual battery supply**  
**NVG+Wireless Professional (WL) / - W/1h, 65 W/3h, - W/8h,**  
**230 V (SIN)**

Self-contained battery supply with output voltage 230V/AC sine voltage, 2 wire system up to 500m distance. for supply of 1 or 2 luminaires with fluorescent lamps, light bulbs or LED illuminants at 100% luminous flux.

Technical specifications according to DIN - VDA 0108-100 and DIN EN 60598 - 2 - 22. With deep discharge protection and integrated switch - on lock, threshold switch. The supply is handled by a maintenance-free, long life and gas-proof Pb rechargeable battery. The fully electronic and time controlled charging ensures an extended battery life. The LED function and monitoring display shows operating states and faults. A manual activation of a function test is possible through the built-in test button.

Wireless central control and monitoring for large installations of up to 50,000 luminaires with Wireless Professional.



More information  
[www.rp-group.com/en/item/NVGS653WLSE](http://www.rp-group.com/en/item/NVGS653WLSE)



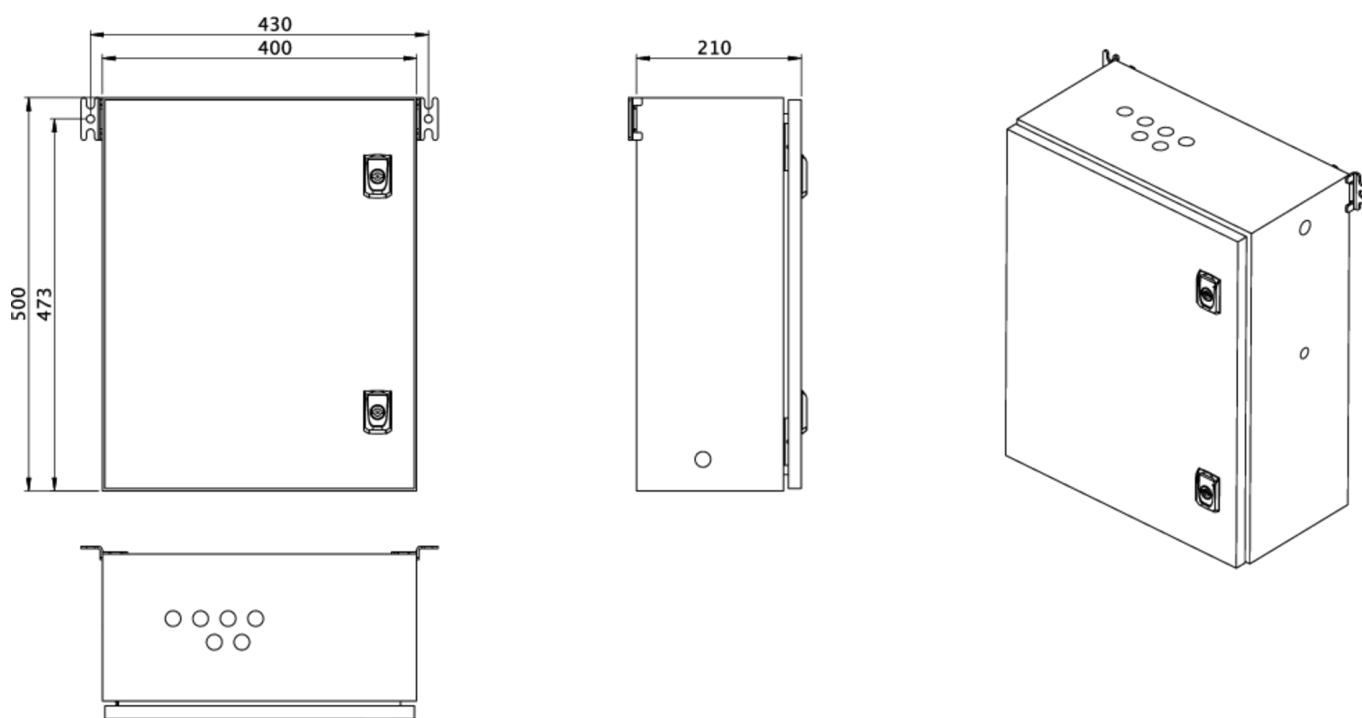
## TECHNICAL DATA

Certification	CE, WEEE
Charger	Yes
Battery compartment	Yes
Supply power 1 h	- W
Supply power 3 h	65 W
Supply power 8 h	- W
Input voltage AC	230 V
Input frequency	50 / 60 Hz
Output voltage AC	230 V (SIN)
Material	Steel sheet
Housing color	Light grey
Insulation class	IP54
Depth	210 mm
Width	400 mm
Height	500 mm



Weight	15 kg
Weight incl. packaging	15 kg
Customs tariff number	85389091
GTIN	4262483027844

## TRANS.MASSZEICHNUNG



As of: 14.12.2025 - Subject to technical changes and errors.