



Art.-Nr: PMW408WL-TT

Exit sign

Wall mounting, Wireless Professional (WL), , 20 m, IP65, Polycarbonate, White

Polycarbonate LED emergency exit sign luminaire with convex shaped surround for wall mounting.

To help with mounting, levelling screws are integrated to compensate for uneven surfaces.

The set of pictograms is inserted on the inside and secured without the use of solvents.

Wireless central control and monitoring for large installations of up to 50,000 luminaires with Wireless Professional. Planning certainty is provided by tool-free, variable use of the pictograms on site. A set of pictograms corresponding to DIN ISO 7010 (2x man in the door and 2 straight arrows) are supplied as standard.

The designation "TT" stands for **low-temperature batteries**. These special **lithium iron phosphate batteries** are designed to function reliably even at low temperatures. They offer stable performance and a long lifespan, even under demanding conditions.



More information

www.rp-group.com/en/item/PMW408WL-TT



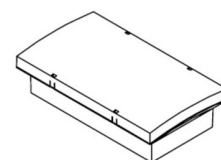
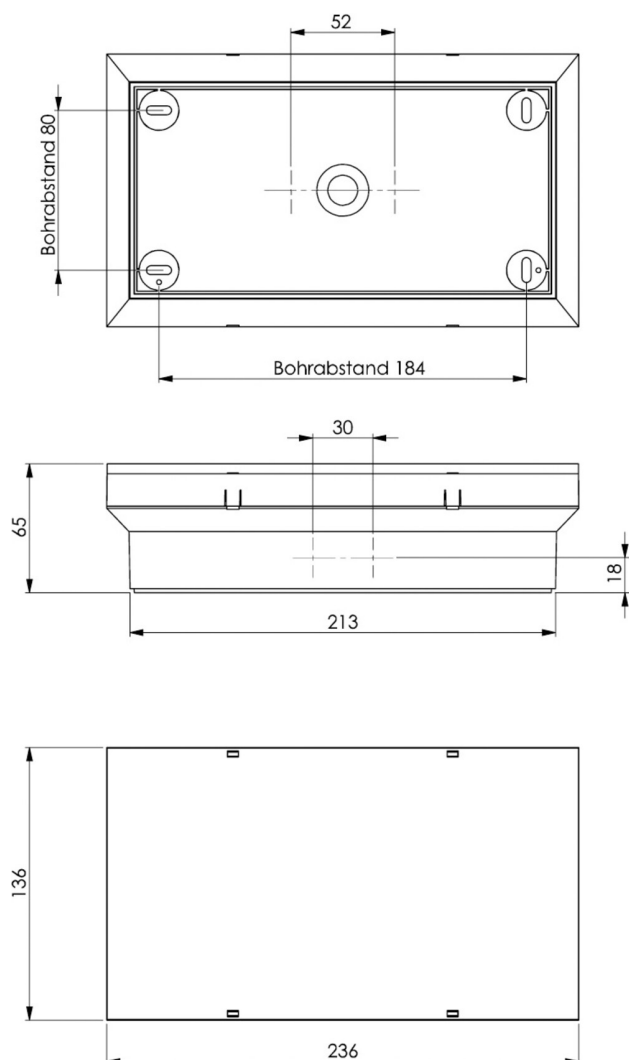
TECHNICAL DATA

Luminaire type	Exit sign
Mounting	Wall mounting
Recognition distance	20 m
Pictograph	Set
Housing material	Polycarbonate
Housing color	White
Protection type (IP)	IP65
Impact resistance (IK)	6
Certification	WEEE, CE, 5 years warranty, HACCP, D-Sign
Insulation class	2
Monitoring	Wireless Professional (WL)
Battery	/
Ambient temperature maintained mode	-15 °C to 40 °C
Ambient temperature non-maintained mode	-15 °C to 40 °C



Depth	65 mm
Width	236 mm
Height	136 mm
Weight	0.6
Weight incl. packaging	0.73
Customs tariff number	94056120
GTIN	4262483024058

TECHNICAL DRAWING





ACCESSORY LIST

PM-PIKTOSETSONDER.01 -

As of: 07.10.2025 - Subject to technical changes and errors.