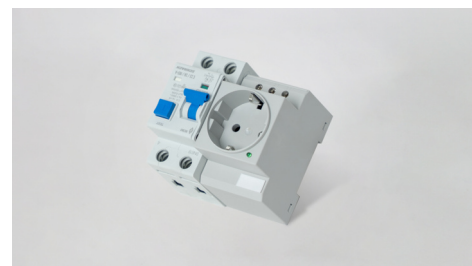




Art.-Nr: SSD
service socket
service socket SSD

The optional service socket provides a convenient 230 V (50 Hz) power source directly at the emergency lighting system. It is intended primarily for service technicians to connect testing devices or tools on site.

The socket is protected by a C10 circuit breaker with residual current protection (LS-FI), ensuring increased safety during maintenance work.



More information
www.rp-group.com/en/item/SSD



TECHNICAL DATA

Housing color	Light grey
Power consumption	3,9 W
Temperature range	-20 °C to 60 °C
Depth	86 mm
Width	80 mm
Height	74 mm
Weight	0.35 kg
Customs tariff number	85389091

As of: 10.06.2025 - Subject to technical changes and errors.