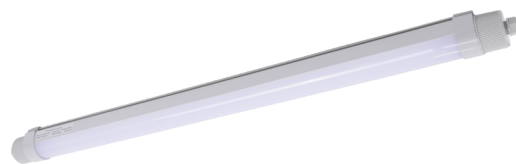




Art.-No.: TU-FW10022-NWS
LED moisture-proof luminaire "VASCA ECO" wall / ceiling construction, 1000x62x64mm, 22W, 2500lm, 4000K, CRI >80, IP66, switchable



LED moisture-proof luminaire, VASCA ECO series, IP66, IK08. Housing and side sections made from polycarbonate, grey. Opal diffuser made from PC, UV-resistant. Symmetric light distribution and homogeneous illumination. Feed-through wiring present. Operating unit integrated, can be switched.

DANE TECHNICZNE

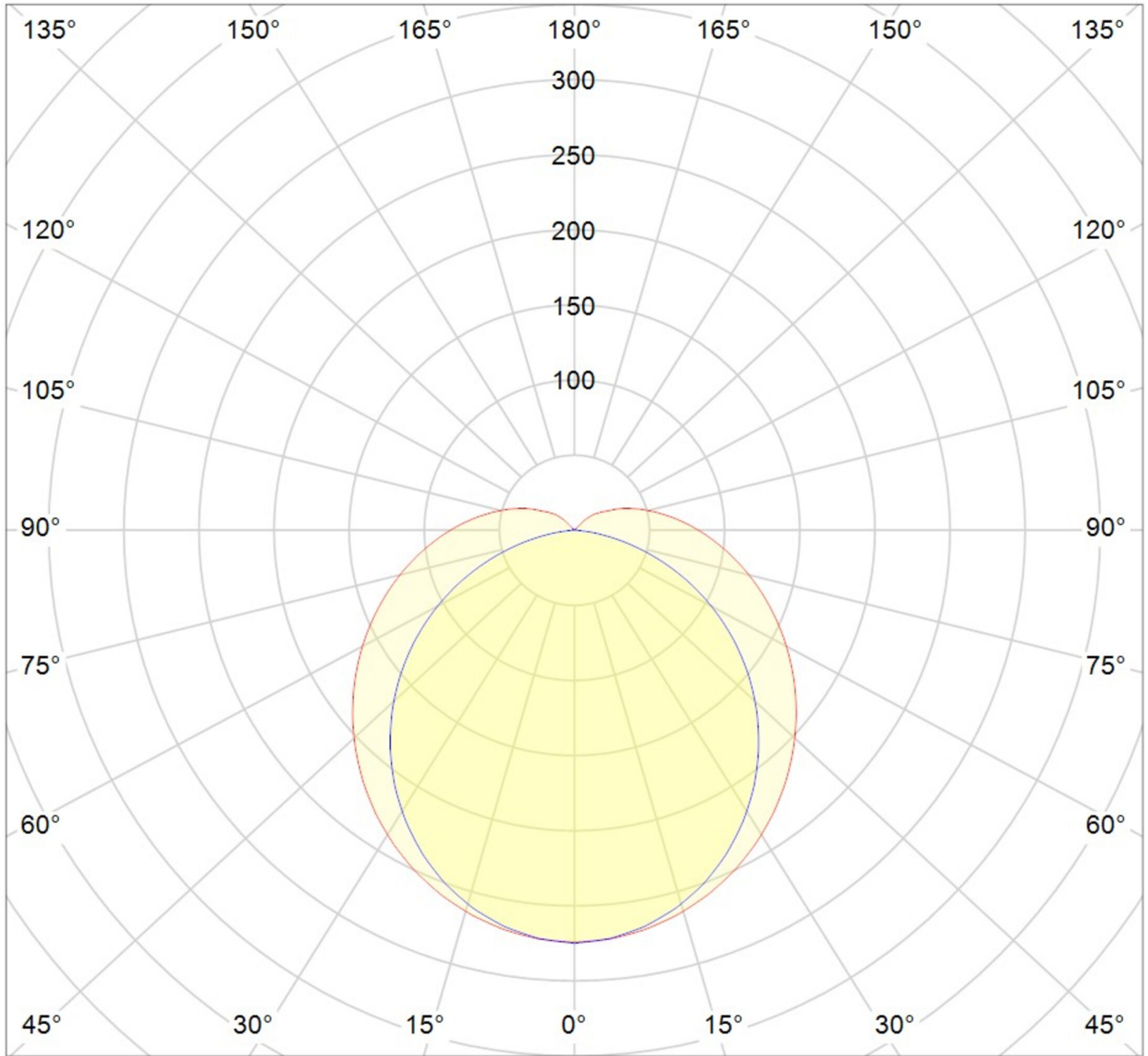
Electrical data	
Input Voltage AC	AC 220-240V / 50-60Hz
Power Factor	0,92
System power	22 W
Inrush current	13,5 A
Inrush current duration	170 μ s
Luminaires on B10A fuse	16 Stk.
Luminaires on B16A fuse	28 Stk.
Luminaires on C10A fuse	30 Stk.
Luminaires on C16A fuse	45 Stk.
DC Ready	No
Connection cross section	1,5 mm ²
Electrical version	with internal operating device, switchable
CASAMBI Ready	Yes
Photometrical data	
Light source	LED
Colour temperature	4 000 K
Rated luminous flux	2 500 lm
Luminous efficacy	114 lm/W
Light colour	840
Colour rendering index (CRI)	> 80
Beam angle	137/107 °
UGR	24,2
Lifetime (h, at 25°C)	50 000 h, L80



Acceptance tests	
Certifications	CE, ENEC, ROHS
Protection class	II
Ingress protection (IP) rating	IP 66
Impact resistance	IK 08
Glow wire test	850° C
Ambient temperature	-25 to +35 C°
Physical data	
Mounting method	ceiling mounted, wall mounted
Housing material	PC UV proof
Housing colour	grey
Cover material	PC UV proof
Length (L)	1 000 mm
Width (B)	62 mm
Height (H)	64 mm
Product weight	0,9 kg
Weight incl. Packaging	1 kg



LIGHT DISTRIBUTION



cd/klm

— C0 - C180 — C90 - C270

$\eta = 100\%$