

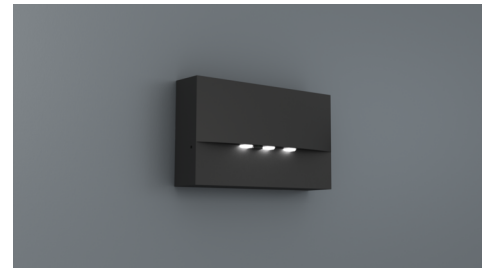


**Art.-Nr: WAF029-AZ**

**Emergency light Centralised power supply systems  
Wall mounting, Without monitoring, CPS, , IP20, Zinc die-cast,  
Anthracite**

High-grade zinc die-cast safety luminaire for surface mounting on the wall.

The radiating characteristics run parallel to the wall to help perfectly illuminate escape and emergency routes.



More information

[www.rp-group.com/en/item/WAF029-AZ](http://www.rp-group.com/en/item/WAF029-AZ)



**TECHNICAL DATA**

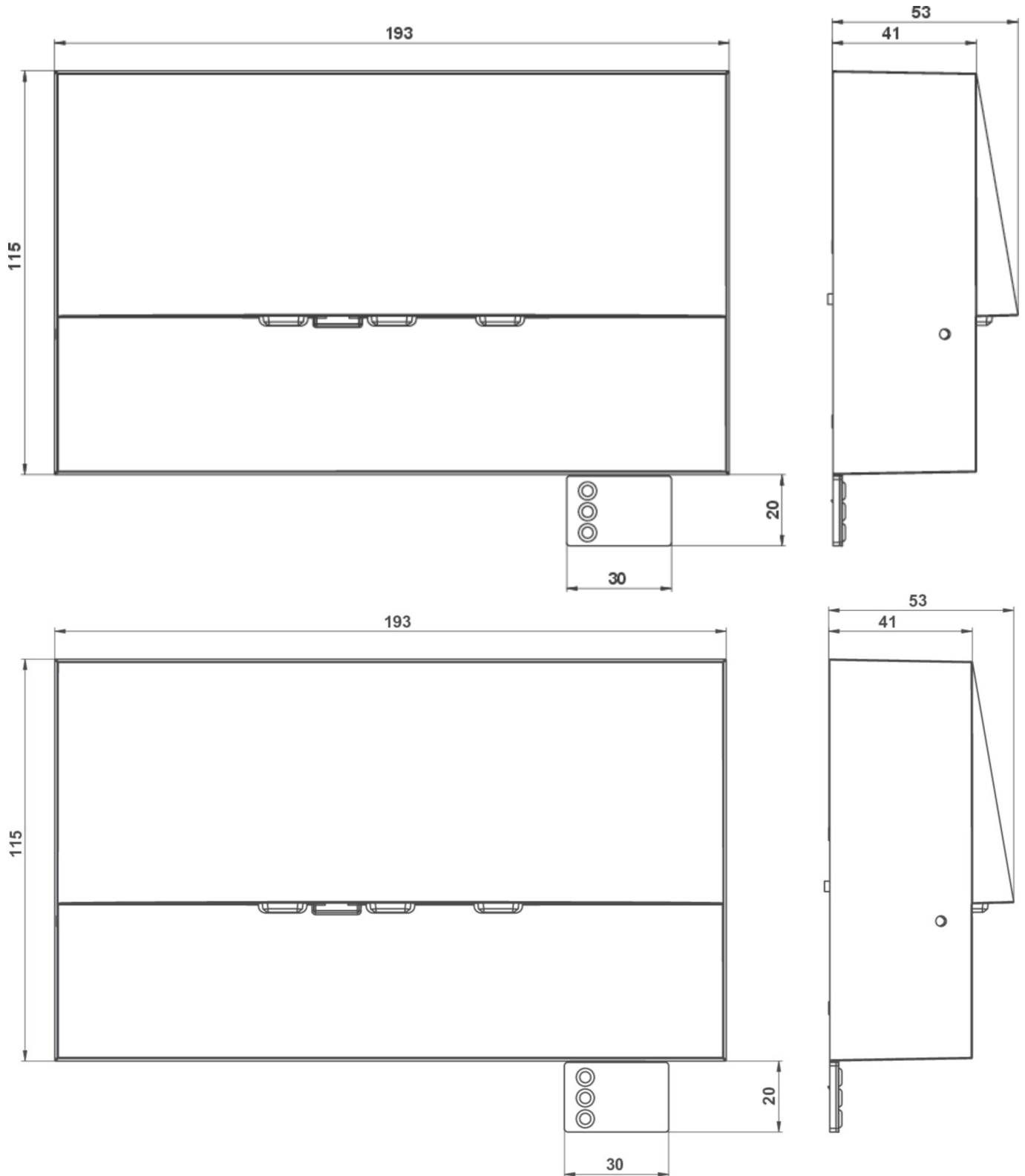
Luminaire type	Emergency light
Mounting	Wall mounting
Pictograph	No
Illuminant	LED
Housing material	Zinc die-cast
Housing color	Anthracite
Protection type (IP)	IP20
Impact resistance (IK)	4
Certification	WEEE, CE
Insulation class	2
Supply	Centralised power supply systems
Monitoring	Without monitoring
Bridging time	CPS
Battery	/
Operating mode	Permanent circuit
Input voltage AC	230 V
Input frequency	50 / 60 Hz
Input voltage DC	100-254 V
Power max.	3,9 W
Power maintained	3,9 W
Power non-maintained	0 W
Ambient temperature maintained mode	-25 °C to 35 °C



Ambient temperature non-maintained mode	-25 °C to 40 °C
Depth	53 mm
Width	193 mm
Height	115 mm
Weight	0.04
Weight incl. packaging	0.07
Connection cross-section	1.5 mm <sup>2</sup>
Switching input	No
Emergency light blocking	No
Battery connection	No
Dimming function	No
Luminous flux mains	420 lm
Luminous flux emergency	420 lm
Customs tariff number	94056180
GTIN	4260581710958



## TECHNICAL DRAWING



As of: 15.12.2025 - Subject to technical changes and errors.