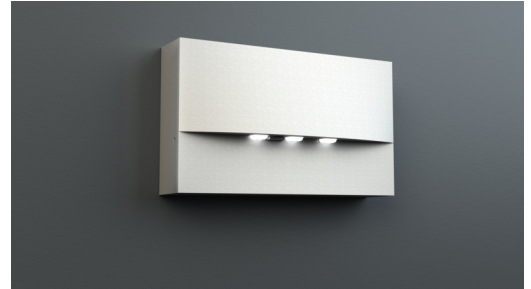




Emergency luminaire Art.-No.: WAF421SC

LED emergency luminaire for surface wall mounting for the lighting of escape and rescue routes according to DIN EN 60598-1, DIN EN 60598-2-22 and DIN EN 1838. It is harmonized with the design of the WEF or WER recessed wall luminaires and fit together with the exit signs of the A-series.



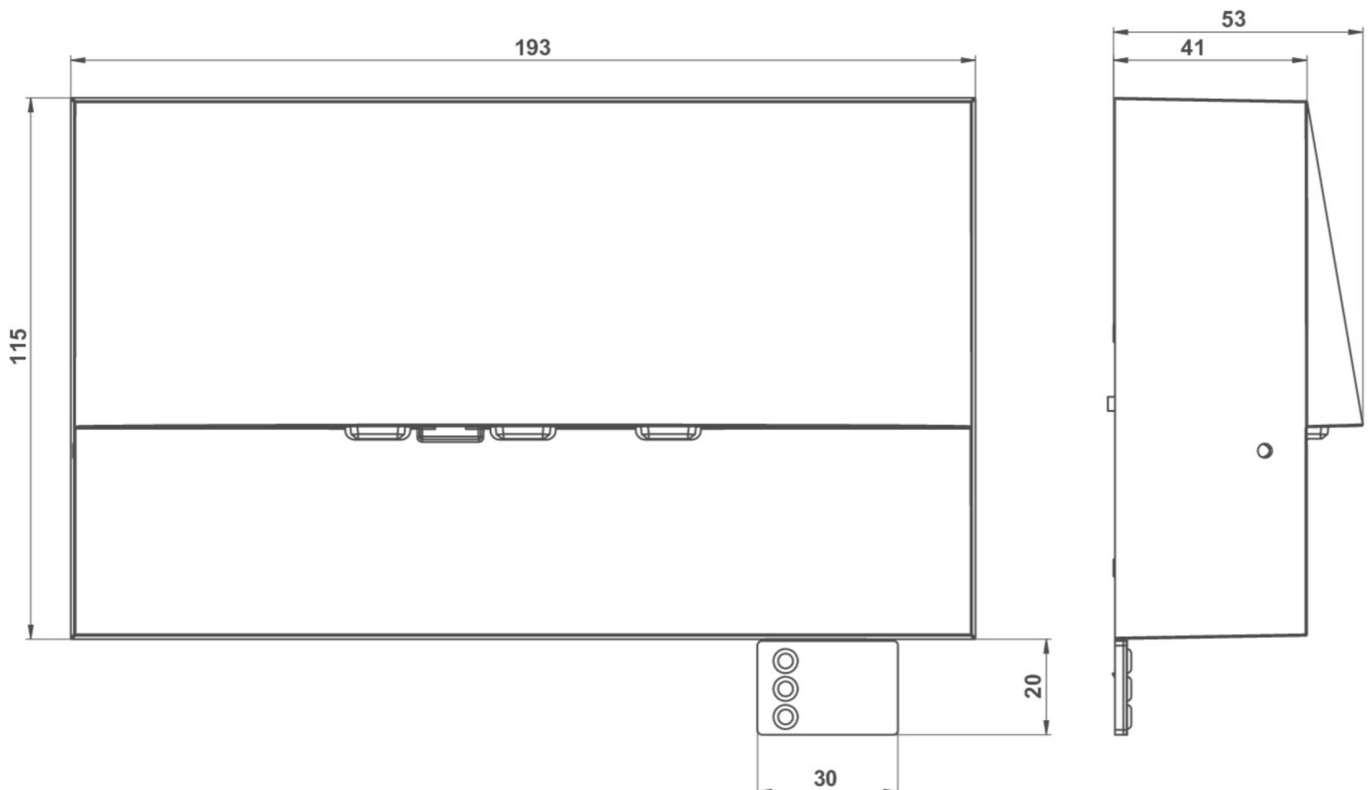
TECHNICAL DATA

Luminaire type	Emergency luminaire
Mounting	Wall mounted
Pictograph	No
Illuminant	LED
Housing material	Zinc die-cast
Colour	RAL 9003
Mechanical rating IP	20
Impact resistance IK	4
Protection class	2
Supply	Single battery
Monitoring	Self-Control
Operation time	1 h
Battery	6.4V/1.2Ah LiFeP04
Operation mode	maintained/non-maintained mode
Input Voltage AC	230 V
Input Frequency Hz	50 Hz
Power consumption max.	5,4 W
Power consumption maintained	4,5 W
Power consumption non-maintained	0,9 W
Ambient temperature maintained mode	-5 °C / 35 °C
Ambient temperature non-maintained mode	-5 °C / 40 °C
Length	193 mm
Width	53 mm
Height	115 mm
Weight	0.22 kg



Weight incl. Packaging	0.25 kg
Connection cross-section	1.5 mm
Switching input L'	Yes
Emergency light blocking	No
Battery connector	Plug
Dimming function	No
Luminous flux mains mode	420 lm
Luminous flux emergency mode	420 lm
Customs tariff number	94056180
Coutry of origin	Germany
EAN	4260766556630

TECHNICAL DRAWING



ACCESSORIES

LFP3212-LEO - LiFePO4 - 2 pcs - 3,2 V /1200mAh

State: 16.04.2024 - Subject to technical changes