

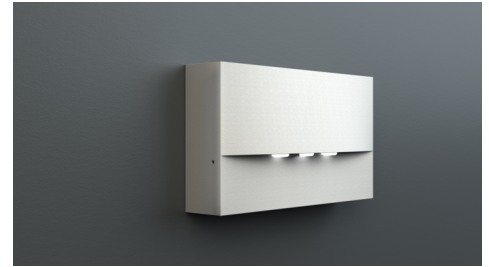


Art.-Nr: WAF421WL
Emergency light Self-contained
Wall mounting, Wireless Professional (WL), 1 h, , IP20, Zinc
die-cast, White

High-grade zinc die-cast safety luminaire for surface mounting on the wall.

The radiating characteristics run parallel to the wall to help perfectly illuminate escape and emergency routes.

Wireless central control and monitoring for large installations of up to 50,000 luminaires with Wireless Professional.



More information

www.rp-group.com/en/item/WAF421WL



TECHNICAL DATA

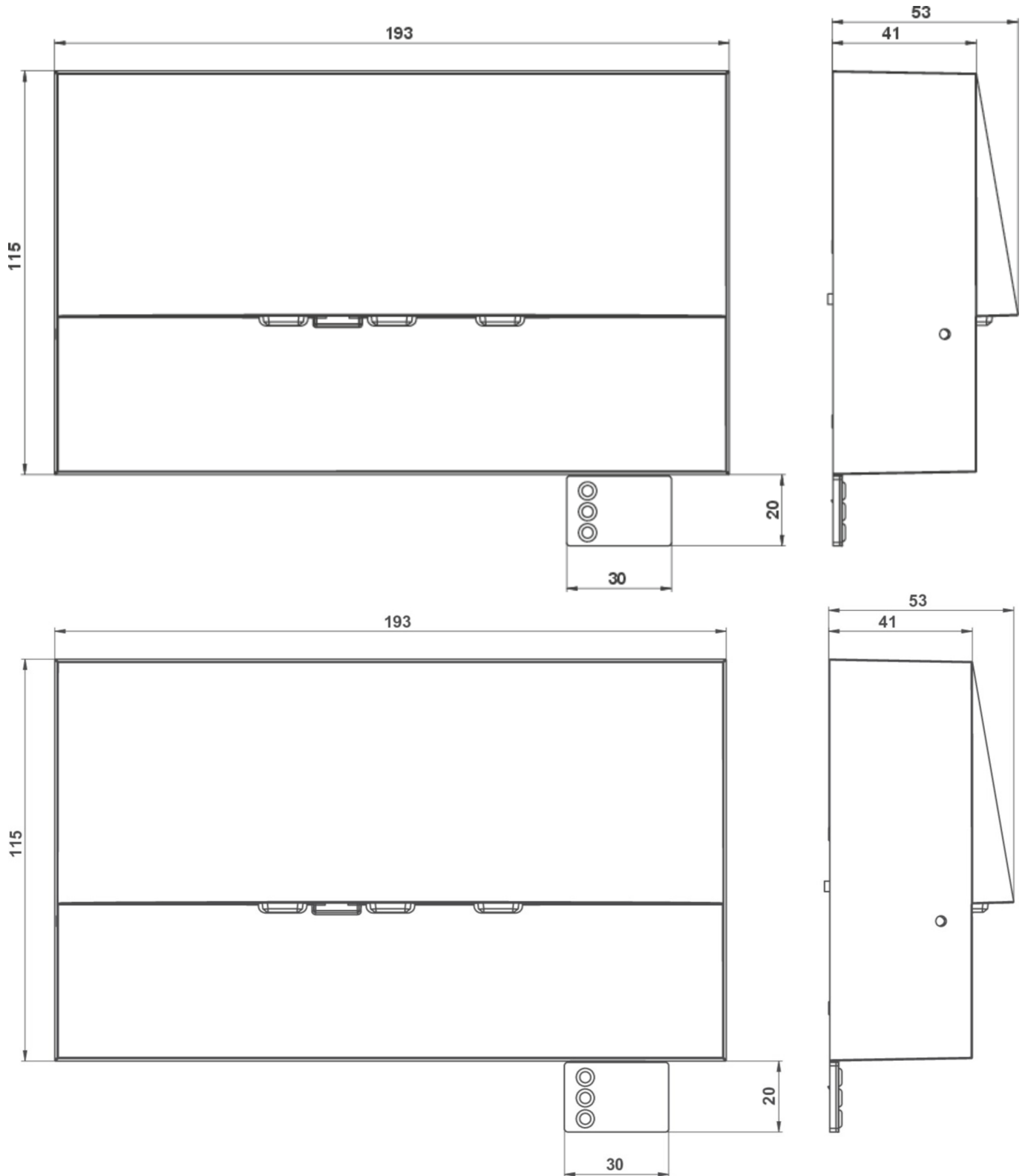
Luminaire type	Emergency light
Mounting	Wall mounting
Pictograph	No
Illuminant	LED
Housing material	Zinc die-cast
Housing color	White
Protection type (IP)	IP20
Impact resistance (IK)	4
Certification	WEEE, CE, 5 years warranty
Insulation class	2
Supply	Self-contained
Monitoring	Wireless Professional (WL)
Bridging time	1 h
Battery	LiFePO4 6,4 V/1,2 Ah
Operating mode	Non-maintained / maintained
Input voltageAC	230 V
Input frequency	50 Hz
Power max.	5,1 W
Power maintained	3,9 W
Power non-maintained	0,8 W



Ambient temperature maintained mode	-5 °C to 35 °C
Ambient temperature non-maintained mode	-5 °C to 40 °C
Depth	193 mm
Width	53 mm
Height	115 mm
Weight	0.22
Weight incl. packaging	0.25
Connection cross-section	2.5 mm ²
Switching input	Yes
Emergency light blocking	Yes
Battery connection	Connector
Dimming function	Yes
Luminous flux mains	420 lm
Luminous flux emergency	420 lm
Customs tariff number	94056180
EAN	4260766551888



TECHNICAL DRAWING



As of: 29.04.2025 - Subject to technical changes and errors.