

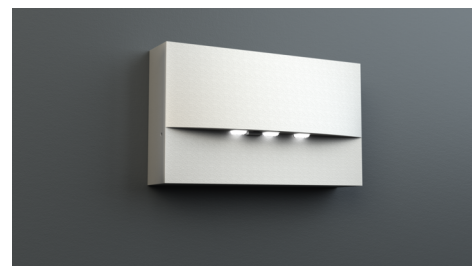


Art.-Nr: WAF423SC
Safety luminaire Single Battery
Wall mounting, SelfControl (SC), 3 h, , IP20, Zinc die-cast,
white

High-grade zinc die-cast safety luminaire for surface mounting on the wall.

The radiating characteristics run parallel to the wall to help perfectly illuminate escape and emergency routes.

Automatic monitoring of safety luminaire with SelfControl.



More information

www.rp-group.com/en/item/WAF423SC



TECHNICAL DATA

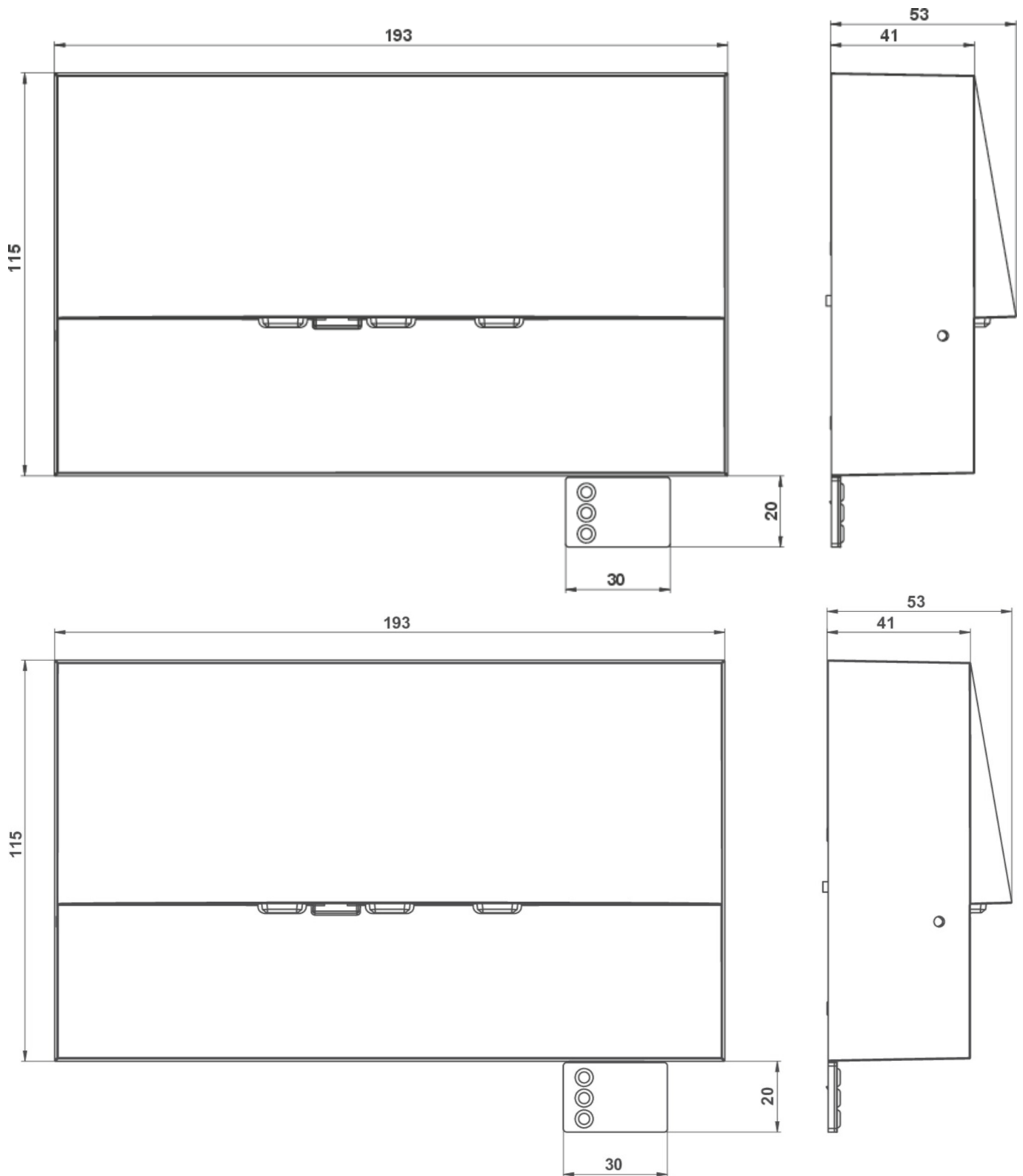
Luminaire type	Safety luminaire
Mounting	Wall mounting
Pictograph	No
Illuminant	LED
Housing material	Zinc die-cast
Housing color	white
Protection type (IP)	IP20
Impact resistance (IK)	4
Certification	WEEE, CE, 5 years warranty
Insulation class	2
Supply	Single Battery
Monitoring	SelfControl (SC)
Bridging time	3 h
Battery	LiFePO4 6,4 V/
Operating mode	Standby circuit / permanent circuit
Input voltageAC	180 V - 250 V
Input frequency	50 Hz
Power max.	4,2 W
Power maintained	3,3 W
Power non-maintained	0,9 W
Ambient temperature maintained mode	-5 °C to 35 °C



Ambient temperature non-maintained mode	-5 °C to 40 °C
Depth	193 mm
Width	53 mm
Height	115 mm
Weight	0.22
Weight incl. packaging	0.25
Connection cross-section	2,5 mm ²
Switching input	Yes
Emergency light blocking	No
Battery connection	Connector
Dimming function	No
Luminous flux mains	210 lm
Luminous flux emergency	210 lm
Customs tariff number	94056180
EAN	4260766556661



TECHNICAL DRAWING





ACCESSORY LIST

LFP3212.K-SET-2AKKU - Battery

As of: 11.02.2025 - Subject to technical changes and errors.