

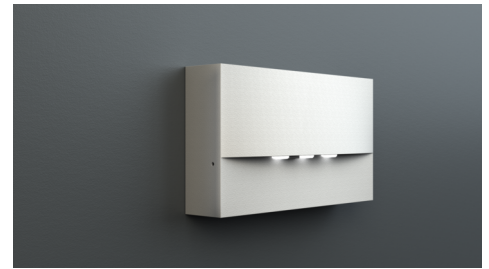


**Art.-Nr: WAF529CC**  
**Emergency light Centralised power supply systems**  
**Wall mounting, CoreCompact 24 (CC), CPS, , IP20, Zinc die-**  
**cast, White**

High-grade zinc die-cast safety luminaire for surface mounting on the wall.

The radiating characteristics run parallel to the wall to help perfectly illuminate escape and emergency routes.

Control and monitoring via central 24 V low-power system.



More information

[www.rp-group.com/en/item/WAF529CC](http://www.rp-group.com/en/item/WAF529CC)



## TECHNICAL DATA

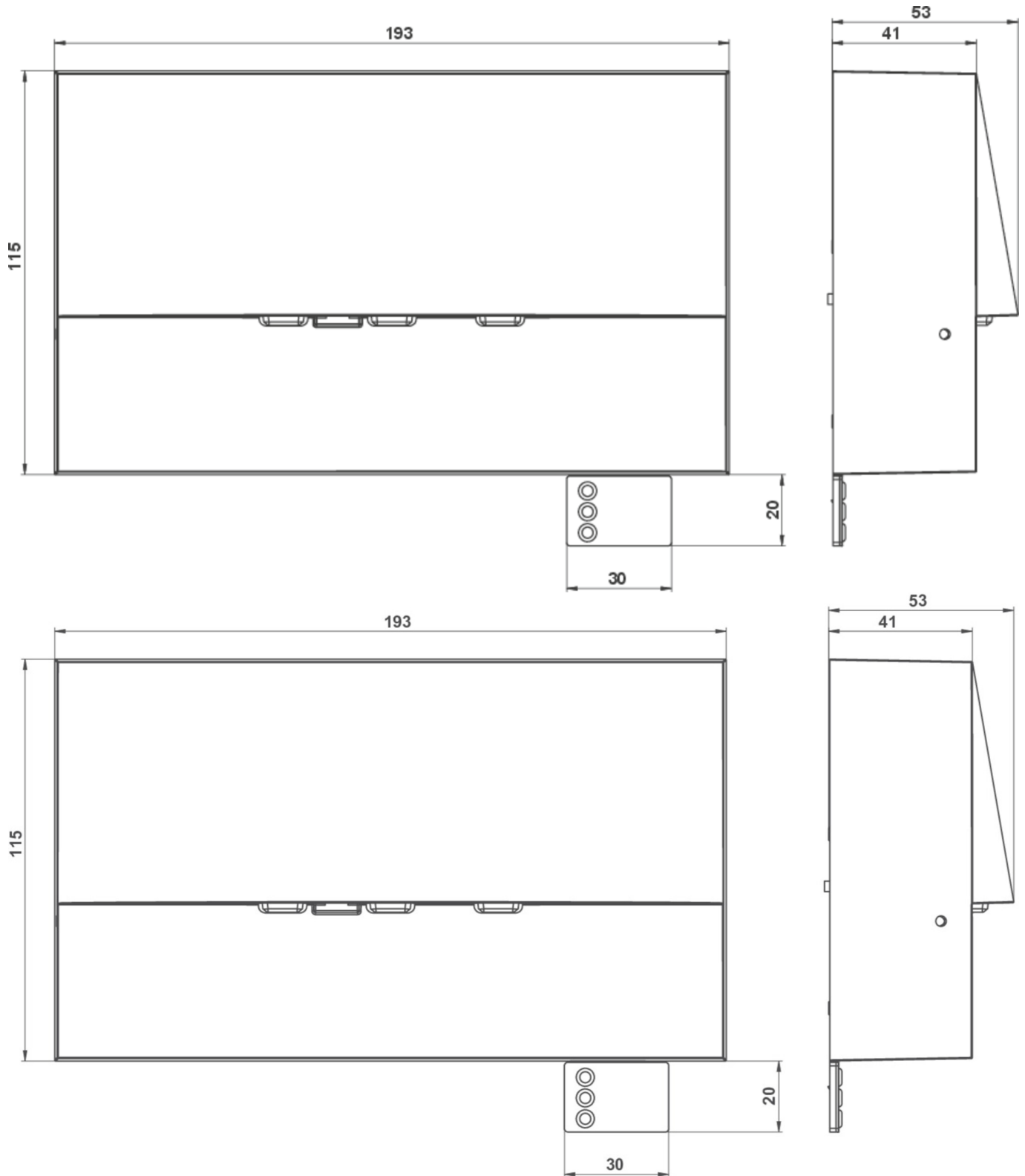
Luminaire type	Emergency light
Mounting	Wall mounting
Pictograph	No
Illuminant	LED
Housing material	Zinc die-cast
Housing color	White
Protection type (IP)	IP20
Impact resistance (IK)	4
Certification	WEEE, CE
Insulation class	3
Supply	Centralised power supply systems
Monitoring	CoreCompact 24 (CC)
Bridging time	CPS
Battery	/
Operating mode	Non-maintained / maintained
Input voltageAC	24 V
Power max.	4,1 W
Power maintained	4,1 W
Power non-maintained	0,4 W
Ambient temperature maintained mode	-5 °C to 40 °C
Ambient temperature non-maintained mode	-5 °C to 40 °C



Depth	193 mm
Width	53 mm
Height	115 mm
Weight incl. packaging	0.03
Connection cross-section	2.5 mm <sup>2</sup>
Switching input	No
Emergency light blocking	No
Battery connection	No
Luminous flux mains	420 lm
Luminous flux emergency	420 lm
Customs tariff number	94056180
EAN	4260682157553



## TECHNICAL DRAWING



As of: 29.04.2025 - Subject to technical changes and errors.