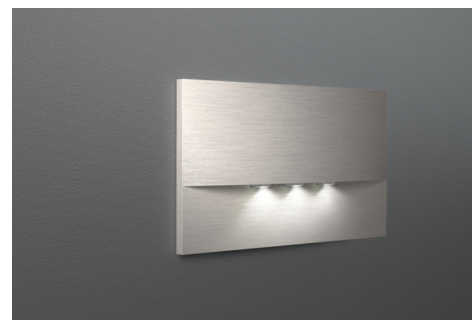




**Art.-Nr: WEF029-E**  
**Emergency light Centralised power supply systems**  
**Recessed wall mounting, Without monitoring, CPS, , IP20,**  
**Zinc die-cast, Stainless steel**

High-grade zinc die-cast safety luminaire for recessed mounting in the wall. This is intended for mounting in conventional double switch boxes where the mounting frame can be aligned to the box. The zinc die-cast ornamental cover is locked using a fastener that cannot be seen from the outside.

The radiating characteristics run parallel to the wall to help perfectly illuminate escape and emergency routes.



More information  
[www.rp-group.com/en/item/WEF029-E](http://www.rp-group.com/en/item/WEF029-E)



## TECHNICAL DATA

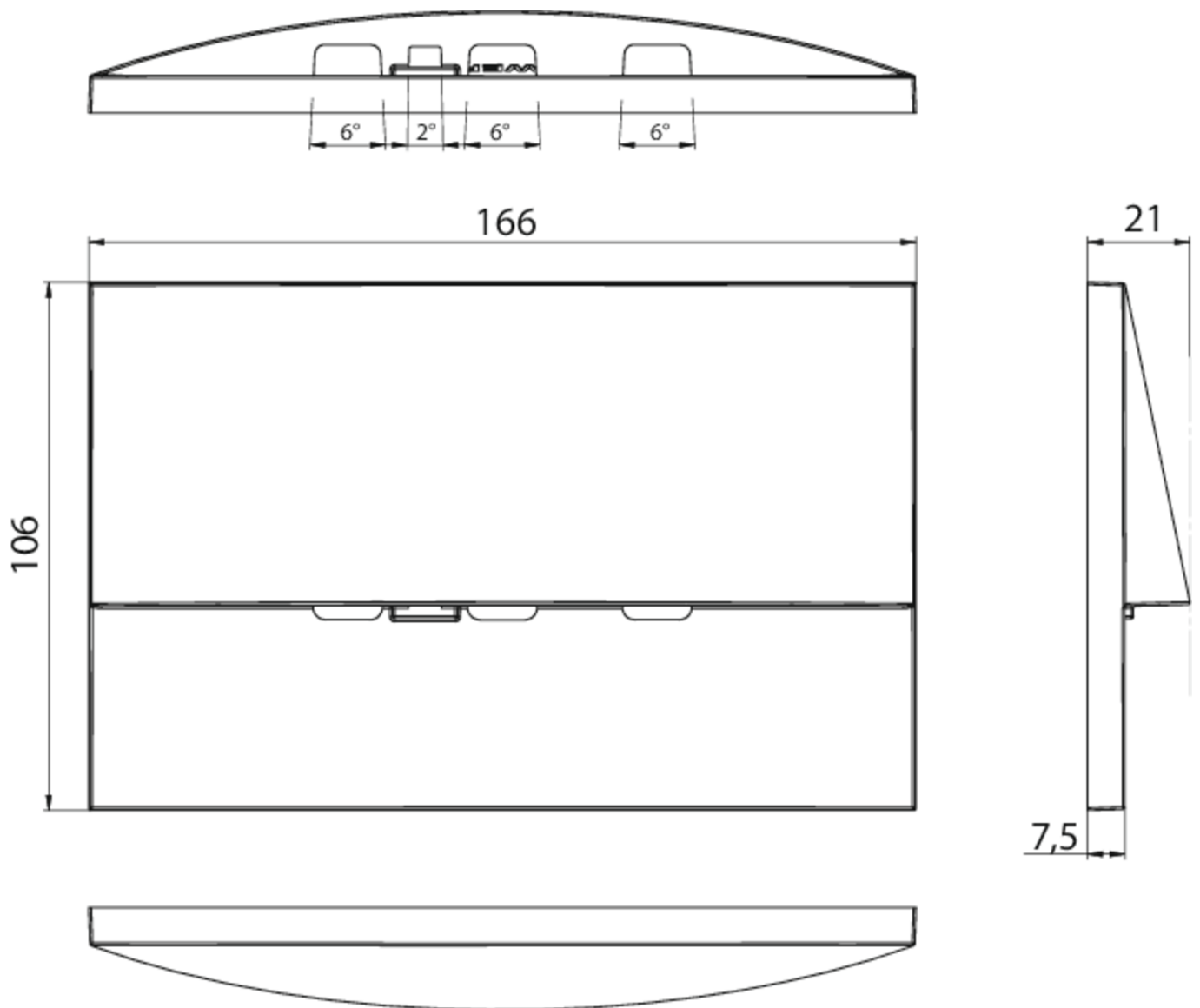
Luminaire type	Emergency light
Mounting	Recessed wall mounting
Pictograph	No
Illuminant	LED
Housing material	Zinc die-cast
Housing color	Stainless steel
Protection type (IP)	IP20
Impact resistance (IK)	7
Certification	WEEE, CE
Insulation class	2
Supply	Centralised power supply systems
Monitoring	Without monitoring
Bridging time	CPS
Battery	/
Operating mode	Permanent circuit
Input voltageAC	230 V
Input frequency	50 / 60 Hz
Input voltage DC	100-254 V
Power max.	3,9 W



Power maintained	3,9 W
Power non-maintained	0 W
Ambient temperature maintained mode	-5 °C to 40 °C
Ambient temperature non-maintained mode	-5 °C to 40 °C
Depth	20 mm
Width	161 mm
Height	107 mm
Installation length	155 mm
Installation width	82 mm
Installation height	70 mm
Weight	0.45
Weight incl. packaging	0.48
Connection cross-section	1.5 mm <sup>2</sup>
Switching input	No
Emergency light blocking	No
Battery connection	No
Dimming function	No
Luminous flux mains	420 lm
Luminous flux emergency	420 lm
Customs tariff number	94056180
EAN	4260682141491



## TECHNICAL DRAWING





As of: 29.04.2025 - Subject to technical changes and errors.