

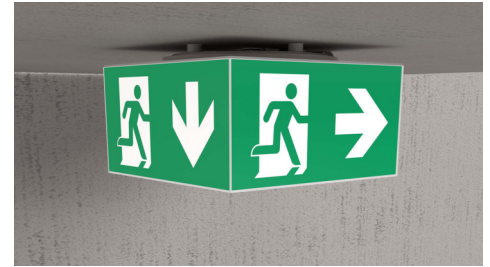


**Art.-Nr: WHXD519CC**  
**Exit sign Centralised power supply systems**  
**Recessed mounting, CoreCompact 24 (CC), CPS, 30 m, IP65,**  
**Plastic, white**

Modern emergency exit sign cube luminaire for identifying escape and emergency routes with easy-to-mount bayonet catch. It can be mounted straight onto the ceiling or suspended using the appropriate accessories.

The cube shape means that this plastic luminaire is easily recognisable from four sides. Ideal for use where routes intersect, e.g. in large stores with aisles.

Control and monitoring via central 24 V low-power system. Planning certainty is provided by printed pictograms, determined on the basis of logic. The pictograms used correspond to DIN ISO 7010 (arrow to the right, left and down).



More information  
[www.rp-group.com/en/item/WHXD519CC](http://www.rp-group.com/en/item/WHXD519CC)



## TECHNICAL DATA

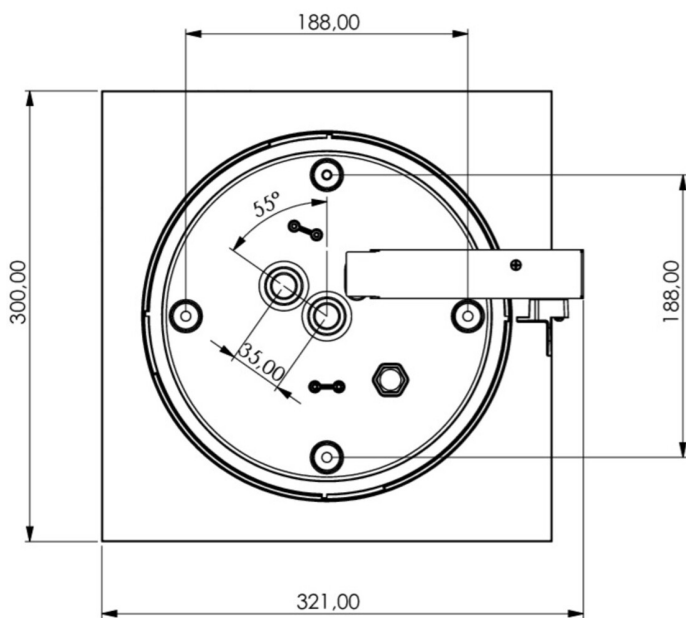
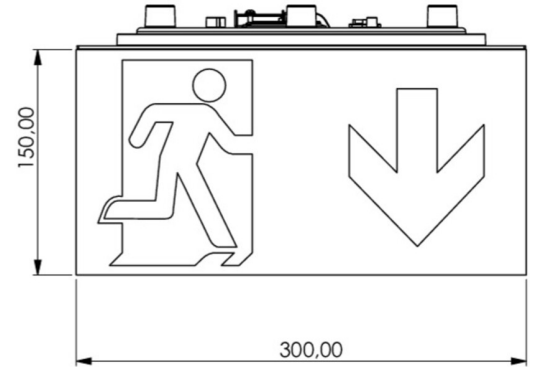
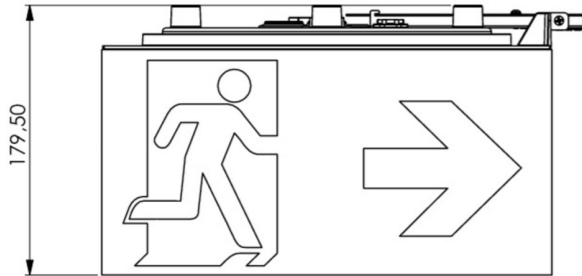
Luminaire type	Exit sign
Mounting	Recessed mounting
Recognition distance	30 m
Pictograph	Set
Illuminant	LED
Housing material	Plastic
Housing color	white
Protection type (IP)	IP65
Impact resistance (IK)	4
Certification	WEEE, CE, D-Sign
Insulation class	3
Supply	Centralised power supply systems
Monitoring	CoreCompact 24 (CC)
Bridging time	CPS
Battery	/
Operating mode	Standby circuit / permanent circuit
Input voltageAC	24 V
Power max.	5,1 W



Power DS	5,1 W
Power BS	0,4 W
Ambient temperature DS	-5 °C to 40 °C
Ambient temperature BS	-5 °C to 40 °C
Depth	300 mm
Width	300 mm
Height	179.5 mm
Weight	1.55
Weight incl. packaging	1.78
Connection cross-section	2.5 mm <sup>2</sup>
Switching input	No
Emergency light blocking	No
Battery connection	No
Luminous flux mains	520 lm
Luminous flux emergency	520 lm
Customs tariff number	94056120
EAN	4260682157690



## TECHNICAL DRAWING



## ACCESSORY LIST

- WKO -
- DSA-Y4M - Wire suspension
- DSA-Y4M-APA - Wire suspension

As of: 21.01.2025 - Subject to technical changes and errors.