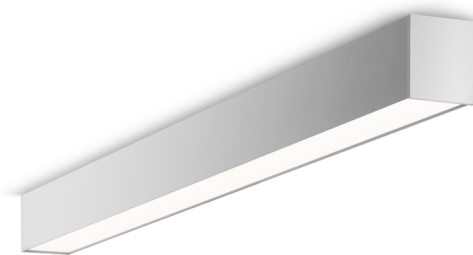




**Art.-No.: YWDLA-LANS-1001-U**  
**LED luminaire "LARO", w-/c- surface mounting,**  
**rectangular, 1122x93x80mm, 10W, 1250lm, 4000K, CRI**  
**>80, IP40, UGR <19, switchable**

LED ceiling- and wall-mounted luminaire, LARO series, with direct and direct/indirect beam. Housing made from aluminium, white, powder-coated. Diffuser made from plastic (PMMA), micro-prismatic, UV-stabilised. Operating unit can be switched or dimmed (DALI dimmer), integrated. UGR < 19 and screen-compliant in accordance with EN 12464-1. Version with CASAMBI® Bluetooth control available.



### DANE TECHNICZNE

Electrical data	
Input Voltage AC	AC 220-240V / 50-60Hz
Power Factor	0,97
System power	10 W
Luminaires on B10A fuse	55 Stk.
Luminaires on B16A fuse	90 Stk.
Luminaires on C10A fuse	65 Stk.
Luminaires on C16A fuse	100 Stk.
Connection cross section	1,5 mm <sup>2</sup>
Electrical version	with internal operating device, switchable
CASAMBI Ready	Yes
Photometrical data	
Light source	LED
Colour temperature	4 000 K
Rated luminous flux	1 250 lm
Luminous efficacy	125 lm/W
Light colour	840
Colour rendering index (CRI)	> 80
Colour tolerance	2
Beam angle	76/79,8 °
UGR	19
Lifetime (h, at 25°C)	50 000 h, L80



Acceptance tests	
Certifications	CE
Protection class	I
Ingress protection (IP) rating	IP 40
Glow wire test	650° C
Ambient temperature	0 to +25 C°
Physical data	
Mounting method	ceiling mounted, wall mounted
Housing material	Aluminium
Housing colour	white
Cover material	PMMA
Length (L)	1 122 mm
Width (B)	93 mm
Height (H)	80 mm
Product weight	4,7 kg
Weight incl. Packaging	4,9 kg
Packaging Length (L)	200 mm
Packaging Width (B)	150 mm
Packaging Height (H)	150 mm



**LIGHT DISTRIBUTION**

