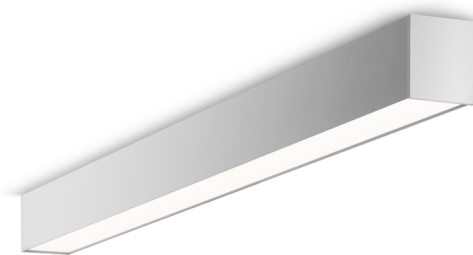




Art.-No.: YWDLA-LAWD-1001-U
LED luminaire "LARO", w-/c- surface mounting,
rectangular, 1122x93x80mm, 10W, 1200lm, 3000K, CRI
>80, IP40, UGR <19, Dali dimmable

LED ceiling- and wall-mounted luminaire, LARO series, with direct and direct/indirect beam. Housing made from aluminium, white, powder-coated. Diffuser made from plastic (PMMA), micro-prismatic, UV-stabilised. Operating unit can be switched or dimmed (DALI dimmer), integrated. UGR < 19 and screen-compliant in accordance with EN 12464-1. Version with CASAMBI® Bluetooth control available.



DANE TECHNICZNE

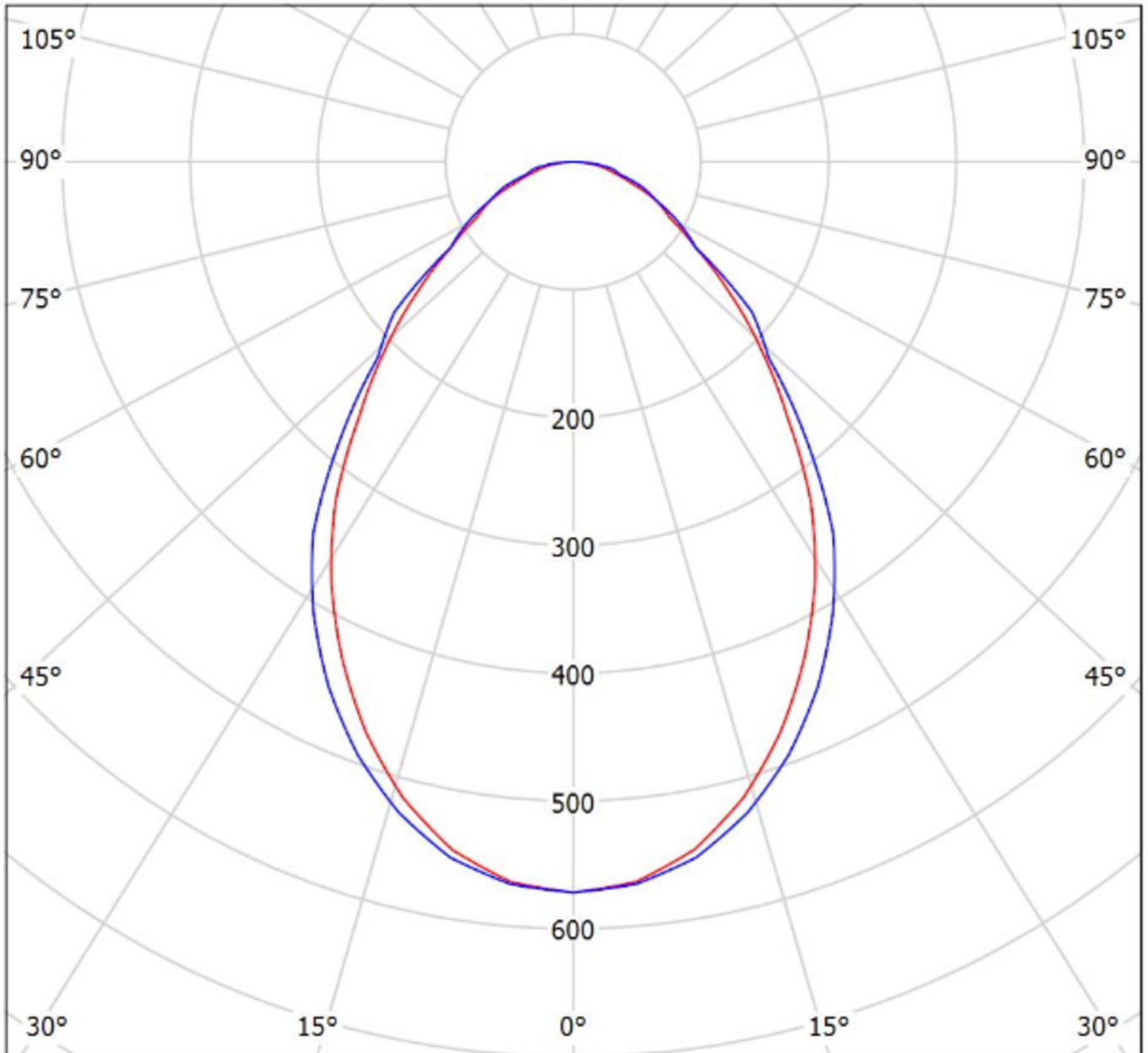
Electrical data	
Input Voltage AC	AC 220-240V / 50-60Hz
Power Factor	0,97
System power	10 W
Inrush current	13,6 A
Inrush current duration	304 µs
Luminaires on B10A fuse	18 Stk.
Luminaires on B16A fuse	28 Stk.
Luminaires on C10A fuse	30 Stk.
Luminaires on C16A fuse	46 Stk.
Connection cross section	1,5 mm ²
Dimming	DALI
Electrical version	with internal operating device, dimmable
CASAMBI Ready	Yes



Photometrical data	
Light source	LED
Colour temperature	3 000 K
Rated luminous flux	1 200 lm
Luminous efficacy	120 lm/W
Light colour	830
Colour rendering index (CRI)	> 80
Colour tolerance	2
Beam angle	76/79,8 °
UGR	18,8
Lifetime (h, at 25°C)	50 000 h, L80
Acceptance tests	
Certifications	CE
Protection class	I
Ingress protection (IP) rating	IP 40
Glow wire test	650° C
Ambient temperature	0 to +25 C°
Physical data	
Mounting method	ceiling mounted, wall mounted
Housing material	Aluminium
Housing colour	white
Cover material	PMMA
Length (L)	1 122 mm
Width (B)	93 mm
Height (H)	80 mm
Product weight	4,7 kg
Weight incl. Packaging	4,9 kg
Packaging Length (L)	200 mm
Packaging Width (B)	150 mm
Packaging Height (H)	150 mm



LIGHT DISTRIBUTION



cd/klm
— C0 - C180 — C90 - C270

$\eta = 100\%$