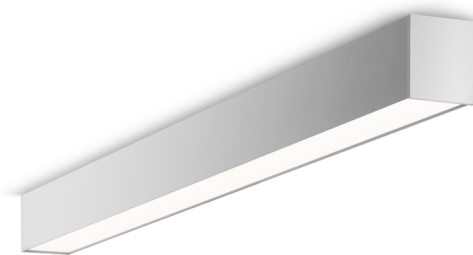




Art.-No.: YWDLA-LAWD-4201-U
LED luminaire "LARO", wall / ceiling surface mounting,
rectangular, 1403x93x80mm, 42W, 4300lm, 3000K, CRI
>80, IP40, UGR <19, Dali dimmable

LED ceiling- and wall-mounted luminaire, LARO series, with direct and direct/indirect beam. Housing made from aluminium, white, powder-coated. Diffuser made from plastic (PMMA), micro-prismatic, UV-stabilised. Operating unit can be switched or dimmed (DALI dimmer), integrated. UGR < 19 and screen-compliant in accordance with EN 12464-1. Version with CASAMBI® Bluetooth control available.



DANE TECHNICZNE

Electrical data	
Input Voltage AC	AC 220-240V / 50-60Hz
Power Factor	0,95
System power	42 W
Inrush current	20 A
Luminaires on B10A fuse	15 Stk.
Luminaires on B16A fuse	24 Stk.
Luminaires on C10A fuse	24 Stk.
Luminaires on C16A fuse	40 Stk.
Connection cross section	1,5 mm ²
Dimming	DALI
Electrical version	with internal operating device, dimmable
CASAMBI Ready	Yes



Photometrical data	
Light source	LED
Colour temperature	3 000 K
Rated luminous flux	4 300 lm
Luminous efficacy	102 lm/W
Light colour	830
Colour rendering index (CRI)	> 80
Colour tolerance	2
Beam angle	68/66 °
UGR	18,7
Lifetime (h, at 25°C)	50 000 h, L80
Acceptance tests	
Certifications	CE
Protection class	I
Ingress protection (IP) rating	IP 40
Glow wire test	650° C
Ambient temperature	0 to +25 C°
Physical data	
Mounting method	ceiling mounted, wall mounted
Housing material	Aluminium
Housing colour	white
Cover material	PMMA
Length (L)	1 403 mm
Width (B)	93 mm
Height (H)	80 mm
Product weight	6,3 kg
Weight incl. Packaging	6,5 kg
Packaging Length (L)	1 600 mm
Packaging Width (B)	150 mm
Packaging Height (H)	150 mm



LIGHT DISTRIBUTION

