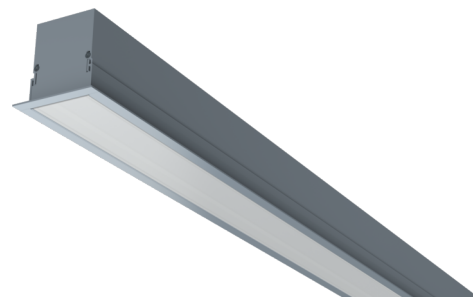




**Art.-Nr: YWDMA-LENS-1701-D**  
**LED luminaire "MAVS", ceiling recessed mounting,**  
**rectangular, 585x79x79mm, 17W, 1800lm, 4000K, CRI >80,**  
**IP40, white, switchable**

LED ceiling- and wall-mounted luminaire, MAVS. Housing made from aluminium, white, powder-coated. Diffuser made from plastic (PMMA), opal, UV-stabilised. Operating unit can be switched or dimmed (DALI dimmer), integrated. Version with CASAMBI® Bluetooth control available. DC compatible.



More information

[www.rp-group.com/en/item/YWDMA-LENS-1701-D](http://www.rp-group.com/en/item/YWDMA-LENS-1701-D)



## TECHNICAL DATA

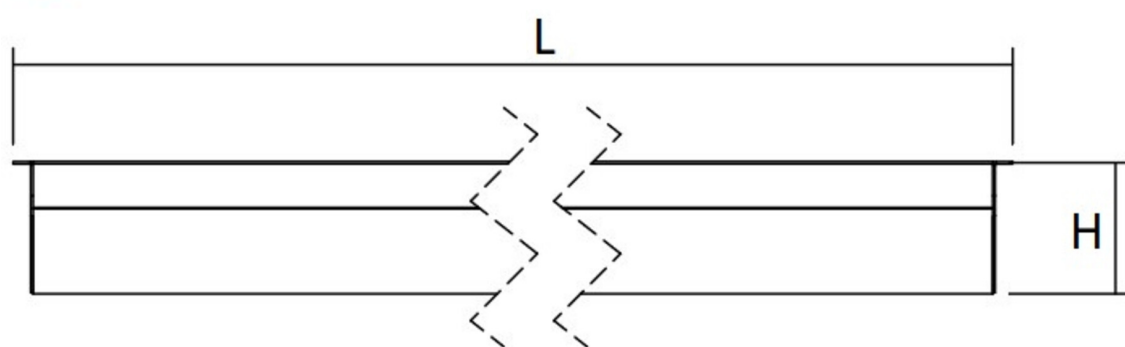
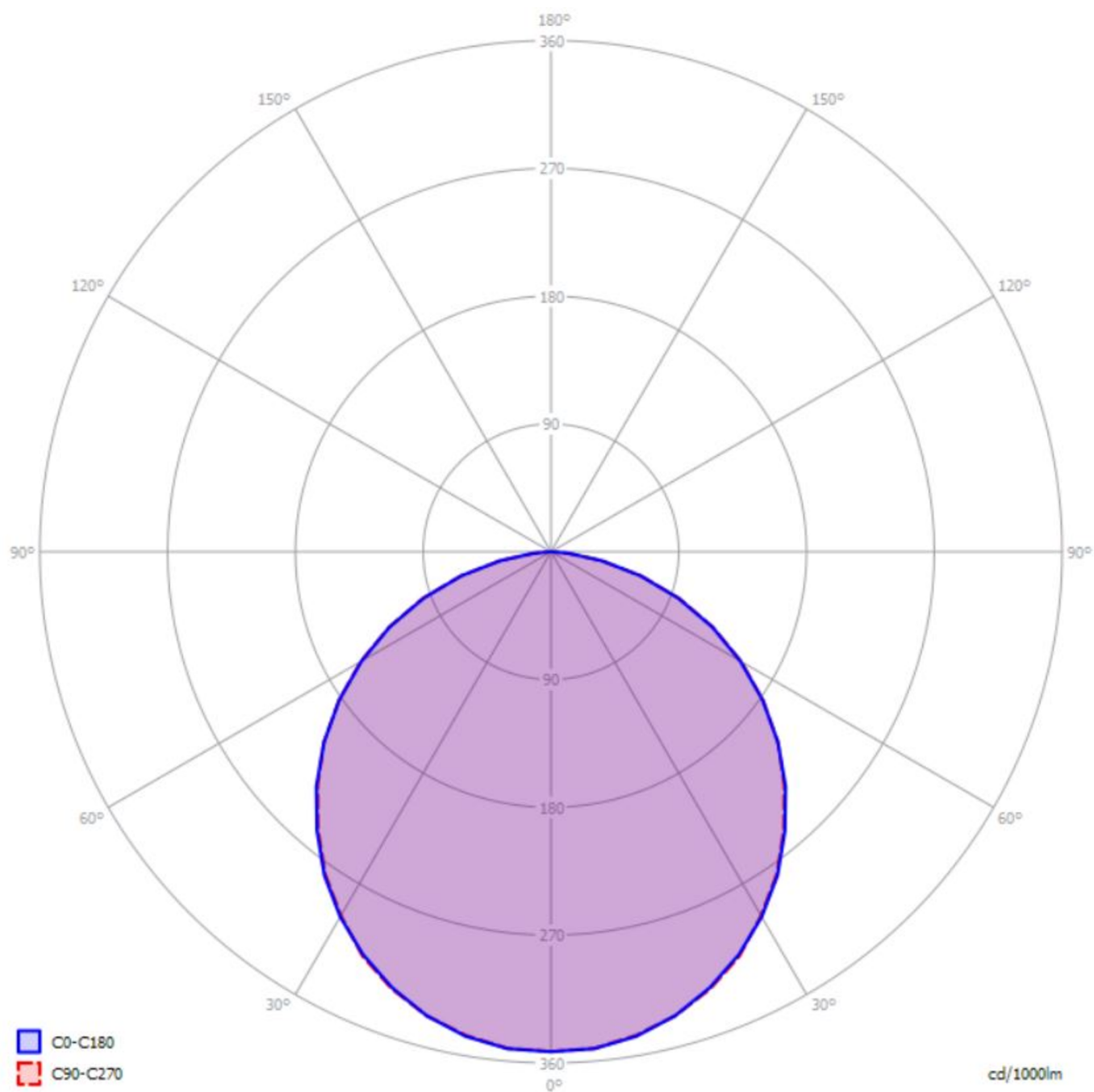
Dimensions	
Product dimensions Length	585 mm
Product dimensions Width	79 mm
Product dimensions Height	79 mm
Product weight	1.5 kg
Packaging dimensions	
Packaging dimensions Length	690 mm
Packaging dimensions Width	118 mm
Packaging dimensions Height	75 mm
Weight incl. packaging	1.8 kg
Cutout Dimensions	
Installation depth	150 mm
Color	
Color	Anodised aluminium
Housing material	
Housing material	Aluminium
Certification	
Certification	CE
Insulation class	1
Protection type (IP)	IP40



Electrical connection	
Connection cross-section	2.5 mm <sup>2</sup>
System performance	17 W
Input voltage AC	220-240V / 50-60Hz V
Starting current	21 A
Power factor	0.9 PF
Starting time	126 µs
power supply	
Number of power supply units at LS C16A	60 pcs.
DC suitability	Yes
Electrical design	with internal control gear, Switchable
Light data	
Light source	LED
Rated luminous flux	1800 lm
Colour rendering index	> 80 Ra
Colour tolerance	3
Beam angle	60 °
Color temperature	4000 K
Light color	840
UGR	26.2
Service life	75000 h, L80
Light yield	106 lm/w
Temperatures	
Ambient temperature (Min)	-20 °C
Ambient temperature (Max)	+30 °C
Mounting	
Mounting	Ceiling mounting



TEXT.LICHTVERTEILUNG



cd/1000lm



## ACCESSORY LIST

YWDMA-MONKL-E - Mounting clamp for MAVS, recessed mounting / 1 pc.

As of: 10.04.2025 - Subject to technical changes and errors.