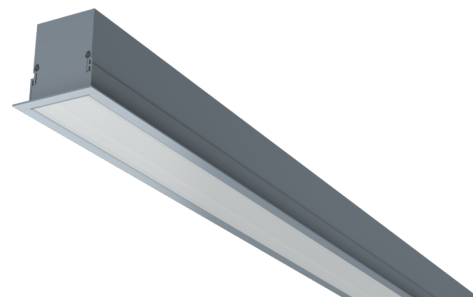




Art.-Nr: YWDMA-LEWS-6101-D

LED luminaire "MAVS", ceiling recessed mounting, rectangular, 1985x79x79mm, 61W, 6100lm, 3000K, CRI >80, IP40, white, switchable

High-quality, rectangular LED ceiling light made of powder-coated aluminium, ultra-flat profile (79 x 79 mm), with opal PMMA diffuser and high colour rendering index (CRI >80).



LED ceiling- and wall-mounted luminaire, MAVS. Housing made from aluminium, white, powder-coated. Diffuser made from plastic (PMMA), opal, UV-stabilised. Operating unit can be switched or dimmed (DALI dimmer), integrated. Version with

CASAMBI® Bluetooth control available. DC compatible.



More information

www.rp-group.com/en/item/YWDMA-LEWS-6101-D



TECHNICAL DATA

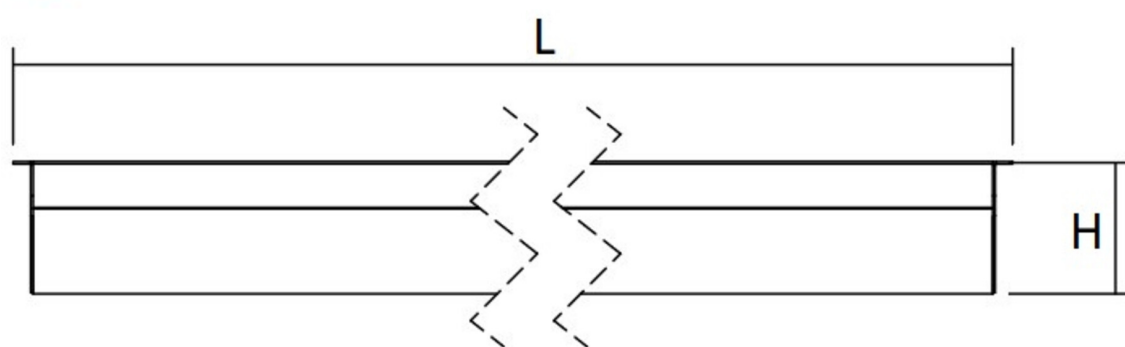
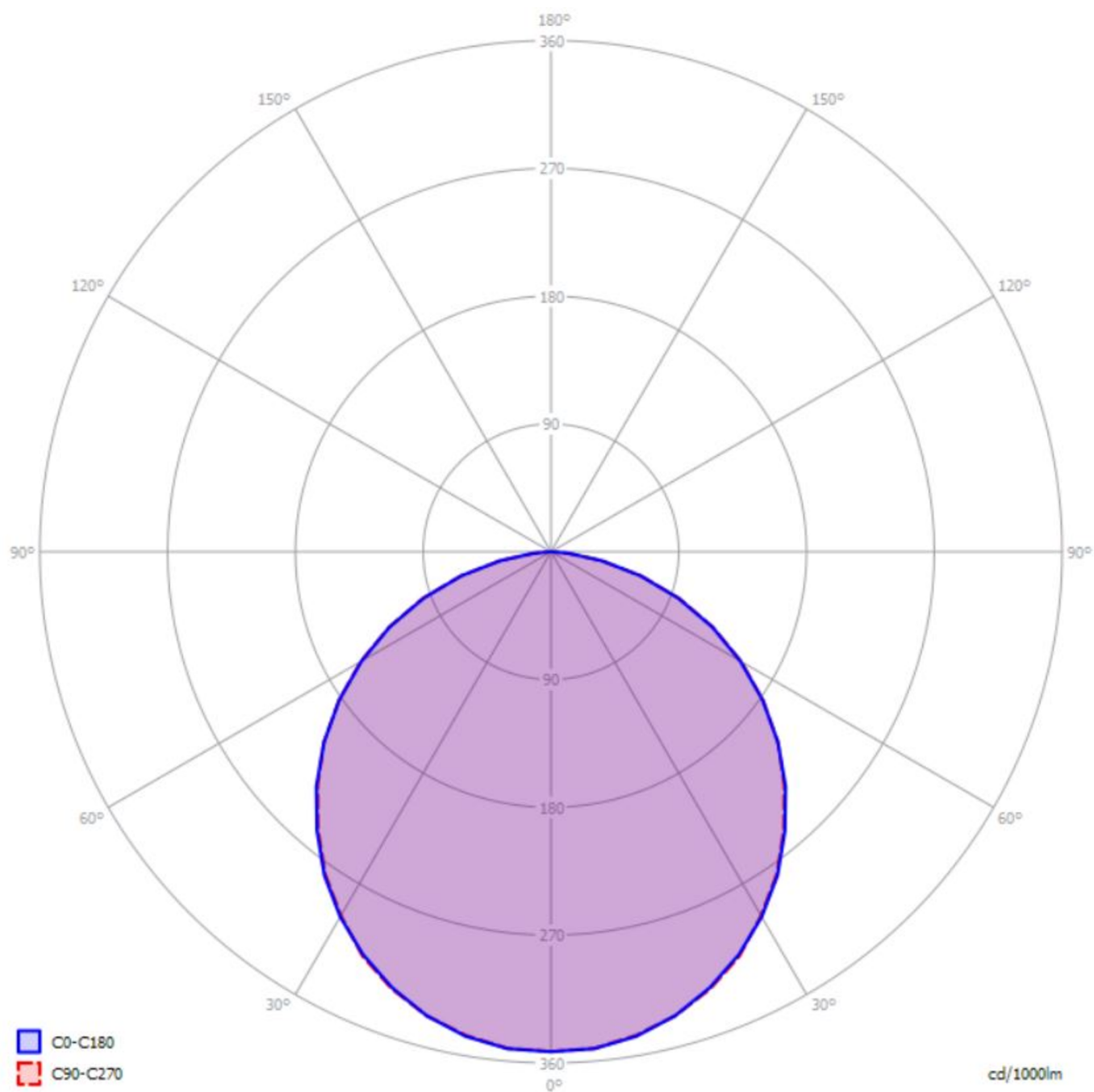
Dimensions	
Product dimensions Length	1985 mm
Product dimensions Width	79 mm
Product dimensions Height	79 mm
Product weight	5 kg
Packaging dimensions	
Packaging dimensions Length	2010 mm
Packaging dimensions Width	123 mm
Packaging dimensions Height	101 mm
Weight incl. packaging	5.9 kg
Cutout Dimensions	
Installation depth	150 mm
Color	
Color	Anodised aluminium
Housing material	
Housing material	Aluminium
Certification	
Certification	CE



Insulation class	1
Protection type (IP)	IP40
Electrical connection	
Connection cross-section	2.5 mm ²
System performance	61 W
Input voltage AC	220-240V / 50-60Hz V
Starting current	29 A
Power factor	0.9 PF
Starting time	143 µs
power supply	
Number of power supply units at LS C16A	42 pcs.
DC suitability	Yes
Electrical design	with internal control gear, Switchable
Light data	
Light source	LED
Rated luminous flux	6100 lm
Colour rendering index	> 80 Ra
Colour tolerance	3
Beam angle	60 °
Color temperature	3000 K
Light color	830
UGR	26.2
Service life	75000 h, L80
Light yield	100 lm/w
Temperatures	
Ambient temperature (Min)	-20 °C
Ambient temperature (Max)	+30 °C
Mounting	
Mounting	Ceiling mounting



TEXT.LICHTVERTEILUNG



cd/1000lm



ACCESSORY LIST

YWDMA-MONKL-E - Mounting clamp for MAVS, recessed mounting / 1 pc.

As of: 14.01.2026 - Subject to technical changes and errors.