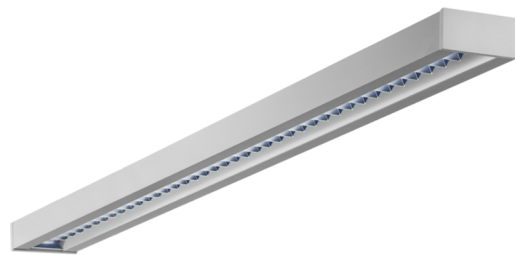




Art.-No.: YWDZO-LAWS-2201-DU LED luminaire "ZOLA"

LED ceiling luminaire, ZOLA series, with direct and direct/indirect beam. Housing made from aluminium, white, powder-coated. Parabolic louvre diffuser, matt. Operating unit can be switched or dimmed (DALI dimmer), integrated. UGR < 16 and screen-compliant in accordance with EN 12464-1. Version with CASAMBI® Bluetooth control available. DC compatible.



DANE TECHNICZNE

Electrical data	
Input Voltage AC	AC 220-240V / 50-60Hz
System power	20 W
Inrush current	41 A
Luminaires on B10A fuse	16 Stk.
Luminaires on B16A fuse	26 Stk.
Luminaires on C10A fuse	26 Stk.
Luminaires on C16A fuse	43 Stk.
DC Ready	Yes
Connection cross section	1,5 mm ²
Electrical version	with internal operating device, switchable
CASAMBI Ready	Yes
Photometrical data	
Light source	LED
Colour temperature	3 000 K
Rated luminous flux	2 750 lm
Luminous efficacy	138 lm/W
Light colour	830
Colour rendering index (CRI)	> 80
Colour tolerance	2
Beam angle	72,8/64,8 °
UGR	14,2
Lifetime (h, at 25°C)	50 000 h, L80



Acceptance tests	
Certifications	CE
Protection class	I
Ingress protection (IP) rating	IP 20
Glow wire test	650° C
Ambient temperature	0 to +25 C°
Physical data	
Mounting method	ceiling mounted
Housing material	Aluminium
Housing colour	white
Cover material	Aluminum parabolic louvre
Length (L)	1 135 mm
Width (B)	125 mm
Height (H)	50 mm
Product weight	3,1 kg
Weight incl. Packaging	3,3 kg
Packaging Length (L)	1 270 mm
Packaging Width (B)	130 mm
Packaging Height (H)	60 mm



LIGHT DISTRIBUTION

